

EMİN ONGAN  
ÜSKÜDAR MÛSİKİ  
CEMİYETİ NEŞRİYATI

## SUZİDİLÂRA PEŞREV

III. SELİM

Usûl ; Diiyek

♩ = 112

Musical notation for the first section of the song, featuring a treble clef, key signature of one sharp (F#), and a 4/4 time signature. The melody consists of eighth and quarter notes, with some rests and accidentals.

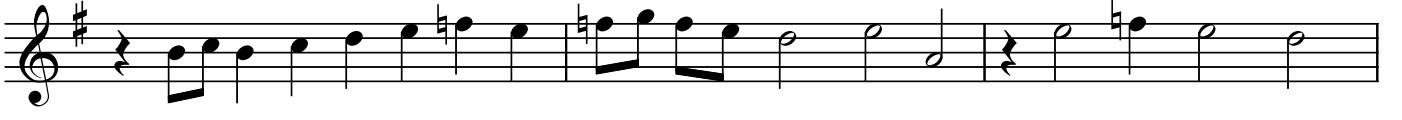
Mûlazime

Musical notation for the second section of the song, featuring a treble clef, key signature of one sharp (F#), and a 4/4 time signature. The melody continues with eighth and quarter notes, including various accidentals and rests.

Orta Hane

Musical notation for the third section of the song, featuring a treble clef, key signature of one sharp (F#), and a 4/4 time signature. The melody continues with eighth and quarter notes, including various accidentals and rests.

SUZİDİLÂRA PEŞREV



*Son Hane*



SON

Dr.Semra Özgiin  
Mart-2014  
Kay; ÜMC