

HİCAZ ŞARKI

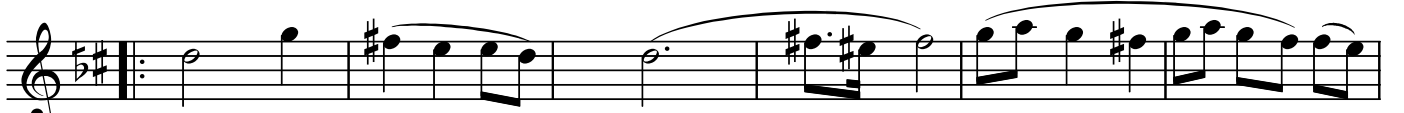
"Sırma saçlı yârimin can bahşederken işvesi"

Usûl : Semâî

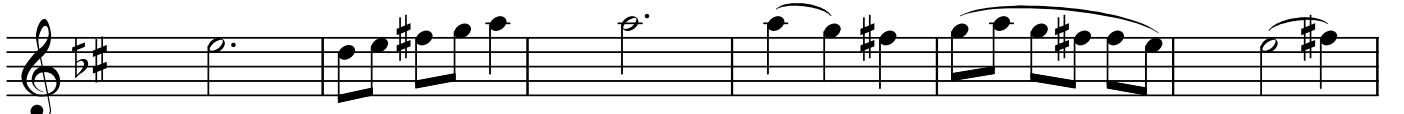
Beste : Mısırlı İbrahim Efendi
Güfte : -



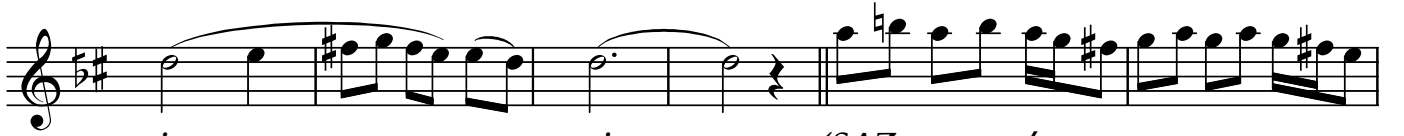
ARANAĞMESİ



Sır ma saç lı yâ ri



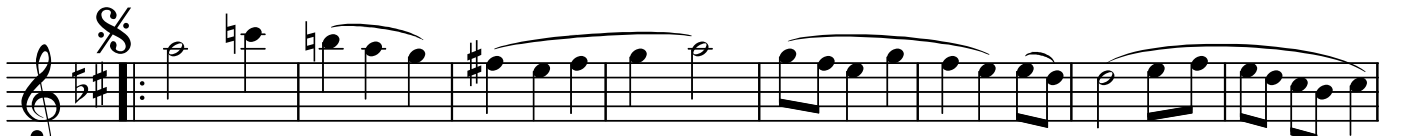
min (SAZ.../.....) can bah şe der ken



iş ve si (SAZ...../.....)



.....) (SAZ...../.....) (SAZ...../.....)



Bâ de ye rev nak ve rir



can lar ya kan gül bû se si SON



(SAZ...../.....)

"Sırma saçlı yârimin can bahşederken işvesi"

(SAZ...../.....)

Rû hu mu tes hir e

der a şüf te dir her

han de si

Dr.Semra Özgün
Kasım-2011

The image shows a musical score for a song. It consists of five staves of music. The first staff is a treble clef with a key signature of two sharps (F# and C#) and a time signature of 2/4. It starts with a double bar line and a repeat sign. The second staff continues the melody with lyrics. The third staff continues the melody with lyrics. The fourth staff continues the melody with lyrics. The fifth staff continues the melody with lyrics and ends with a double bar line and a repeat sign. The lyrics are: "Rû hu mu tes hir e der a şüf te dir her han de si".

*Sırma saçlı yârimin can bahşederken işvesi
Bâdeye revnak verir canlar yakan gül bûsesi
Rûhumu teshir eder aşüftedir her hanesi
Bâdeye revnak verir canlar yakan gül bûsesi*