

RAST PEŞREV

Usûl : Muhammes

Beste : Kemâni Tatyos Efendi

Birinci Hane

Musical notation for the first hane of Rast Peşrev, consisting of four staves of music in 3/4 time signature with a key signature of one sharp (F#). The notation includes various rhythmic values and accidentals.

Teslim

Musical notation for the Teslim section of Rast Peşrev, consisting of four staves of music in 3/4 time signature with a key signature of one sharp (F#). The notation includes various rhythmic values and accidentals.

2. Hane'ye

3. Hane'ye

4. Hane'ye

Karar

Musical notation for the second hane of Rast Peşrev, consisting of four staves of music in 3/4 time signature with a key signature of one sharp (F#). The notation includes various rhythmic values and accidentals.

İkinci Hane

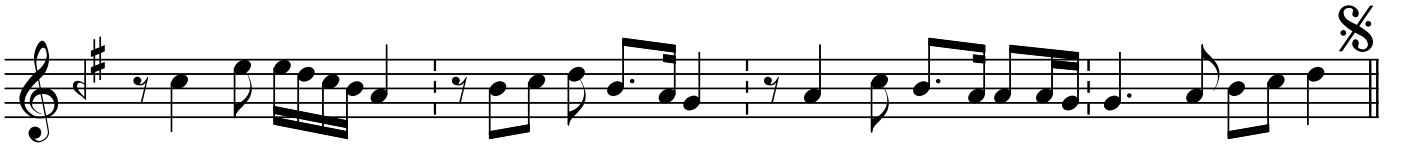
Musical notation for the second hane of Rast Peşrev, consisting of one staff of music in 3/4 time signature with a key signature of one sharp (F#). The notation includes various rhythmic values and accidentals.

RAST PEŞREV

Beste : Kemâni Tatyos Efendi



Üçüncü Hane



Dördüncü Hane



Dr.Semra Özgin
Ocak-2012