

RAST LONGA

Usûl; Sofyan

Yesari Asım ARSOY

1. Hâne

Musical notation for the first Hâne, consisting of two staves of music. The first staff contains a sequence of eighth and quarter notes, with a triplet of eighth notes. The second staff continues the melody with more triplets and quarter notes.

Teslim

Musical notation for the Teslim section, consisting of two staves of music. The first staff starts with a double bar line and contains a sequence of eighth and quarter notes, with a triplet of eighth notes. The second staff continues the melody with more triplets and quarter notes.

2. Hâne

Musical notation for the second Hâne, consisting of two staves of music. The first staff starts with a double bar line and contains a sequence of eighth and quarter notes, with a triplet of eighth notes. The second staff continues the melody with more triplets and quarter notes, ending with a double bar line and a repeat sign.

3. Hâne

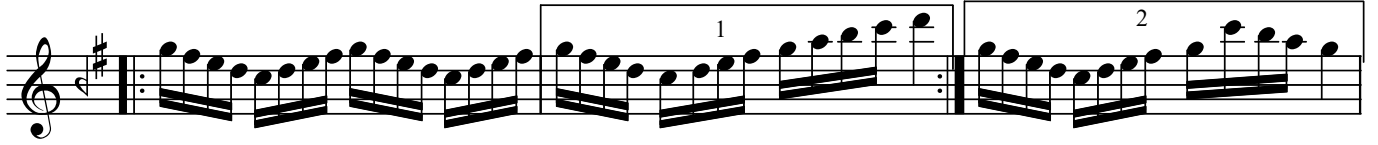
Musical notation for the third Hâne, consisting of two staves of music. The first staff starts with a double bar line and contains a sequence of eighth and quarter notes, with a triplet of eighth notes. The second staff continues the melody with more triplets and quarter notes, ending with a double bar line and a repeat sign.

4. Hâne

Musical notation for the fourth Hâne, consisting of one staff of music. The staff contains a sequence of eighth and quarter notes, with a triplet of eighth notes. The melody is divided into two measures, with the first measure ending with a double bar line and a repeat sign, and the second measure ending with a double bar line and a repeat sign.

RAST LONGA

Yesari Asım ARSOY



Dr.Semra Özgün
Şubat-2020