

RÂHAT'ÜL'ERVAH PEŞREV

Usûl: Muhammes

♩ = 102

Dr. Alâeddin YAVAŞCA
(Beste tar.: 22.06.1984-Haseki)

Birinci Hane

The first hane consists of four staves of music. The first staff begins with a treble clef, a key signature of two sharps (F# and C#), and a 3/4 time signature. The melody starts with a half note, followed by a quarter note, and then a series of eighth notes with slurs. The second staff continues the melody with similar rhythmic patterns. The third staff features a more complex rhythmic pattern with many eighth notes. The fourth staff concludes the hane with a final melodic phrase and a double bar line.

Teslim

The Teslim section consists of four staves of music. The first staff begins with a treble clef, a key signature of two sharps (F# and C#), and a 3/4 time signature. The melody starts with a half note, followed by a quarter note, and then a series of eighth notes with slurs. The second staff continues the melody with similar rhythmic patterns. The third staff features a more complex rhythmic pattern with many eighth notes. The fourth staff concludes the section with a final melodic phrase and a double bar line.

İkinci Hane

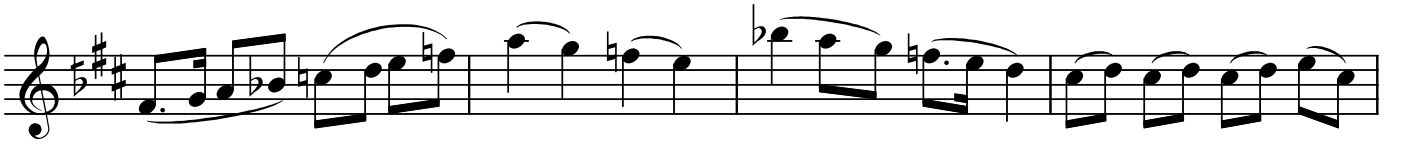
The second hane consists of two staves of music. The first staff begins with a treble clef, a key signature of two sharps (F# and C#), and a 3/4 time signature. The melody starts with a half note, followed by a quarter note, and then a series of eighth notes with slurs. The second staff continues the melody with similar rhythmic patterns and concludes with a final melodic phrase and a double bar line.

"Râhat'ül'ervah peşrev"

Alaeddin Yavaşca



Üçüncü Hane



Dördüncü Hane



Dr.S.Özgün
Nisan 2002