

SEGÂH KÂR-I NÂTIK

Beste: Prof. Dr. Alâeddin YAVAŞCA
Beste: Prof. Mustafa TAHRALI

Usûl: Değişmeli

"Neylerde Segâh nağmesi dillerde sadâsı"

(Beste tar.: 17.02.1994 -
Vişnezade)

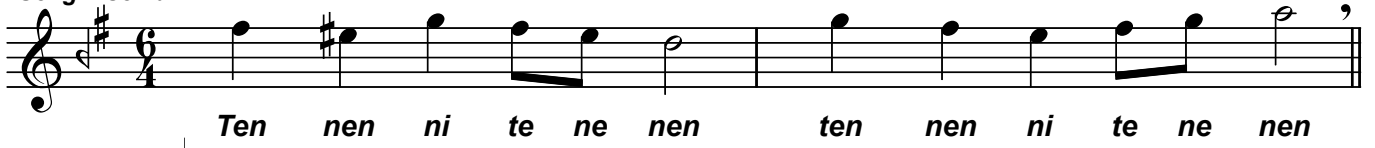
Sengin semâi ♩ = 88

(SEGÂH) Ney ler se SE GÂH nağ me si dil ler de sa dâ
si Gön lüm ce sü rer haş re ka dar
can da sa fâ sı (SAZ.../.....) Yâr yâ rı ce nâ
nim Hem rû hi re vâ nim (SAZ.../.....)
(HÜZZÂM)
Hic ran da ya kar â şı ğı câ nâ ne ha yâ li
HÜZ ZÂM i le zâ hîr i miş el han da ce fâ
sı (SAZ.../.....) Fer yâ dü fi gâ nim
Â vâ ze i câ nim (SAZ.../.....)
Hafif ♩ = 88
(EVC) Bî gâ ne de ğil sey ri ne yâ râ
ni miz aş kın Â henk e vi nin tâ

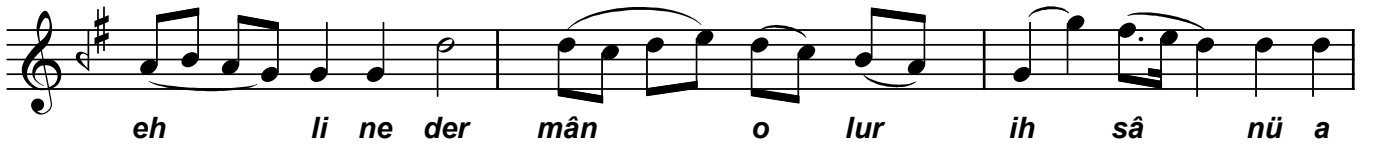
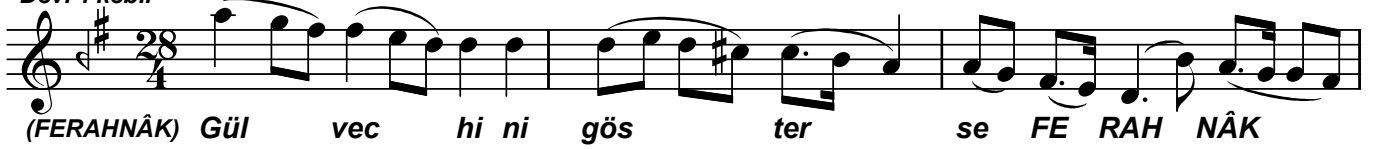
"Neylerde Segâh nağmesi dillerde sadâsı"



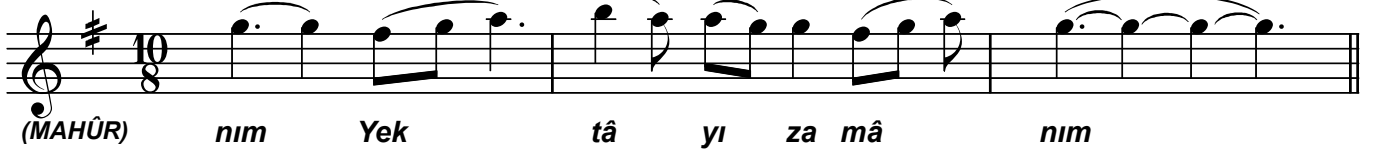
Sengin semâi ♩=88



Devr-i kebir ♩=88



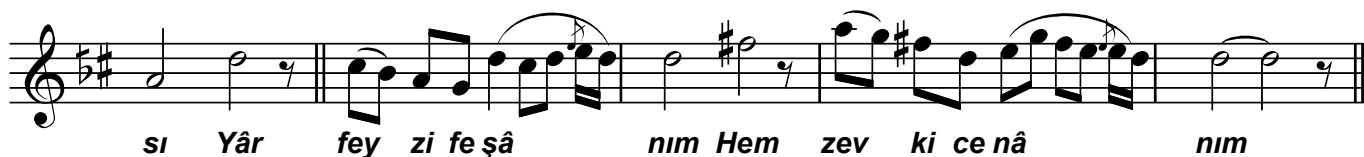
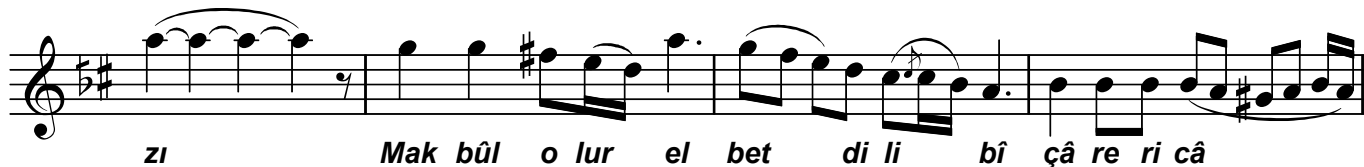
Aksak semâi



Sengin semâi



"Neylerde Segâh nağmesi dillerde sadâsı "



"Neylerde Segâh nağmesi dillerde sadâsı"

Bî şek kü gü mâ nım (SAZ.../.....)
(MUHAYYER)

Bir bir do la şıp per de ler üs tün de ni gâ rın (SAZ.../.....)

Â hir gö rü nür dev ri MU HAY YER de e dâ sı (SAZ.../.....)
(GERDANIYE)

Ey gon ce de hâ nım Fer

hun de ze bâ nım (SAZ.../.....) Her nâğ me de GER DÂ Nİ YE den

sun du ğusey ri (SAZ.../.....) Derd eh li nin ol muş i di der

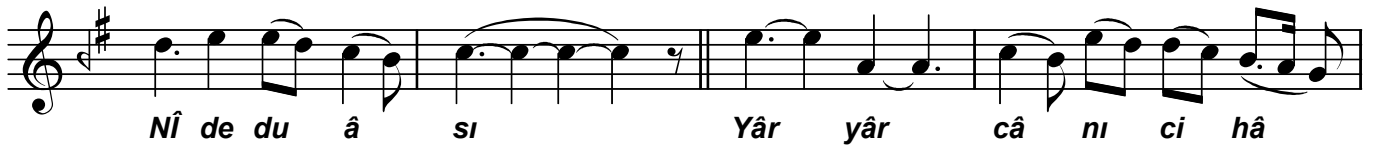
mâ nü şî fâ sı (SAZ.../.....) Yâr dil de ni şâ

nım (SAZ.../...) Der mâ nı ni hâ nım (SAZ.../.....)
Curcuna

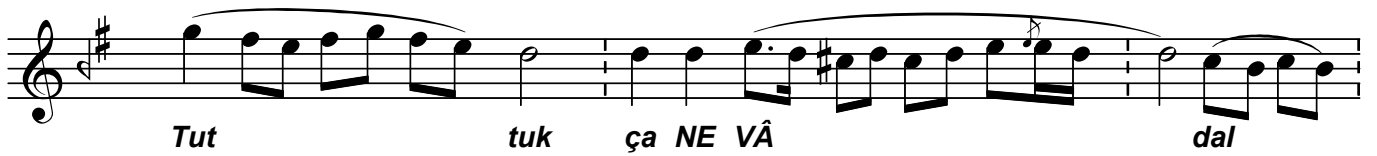
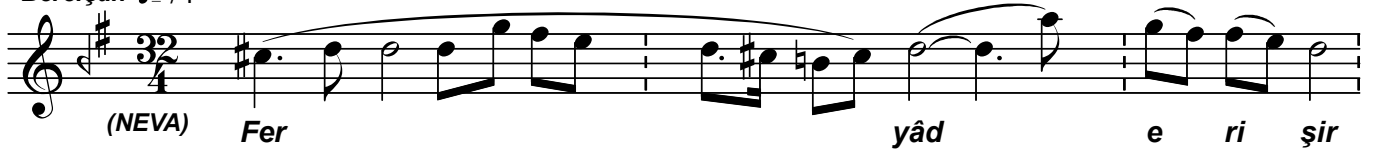
(HÜSEYNİ) Dil â te şî sû zân i le yan mış sa de rin

den Tâ ar şa çı kar sey ri HÜ SEY

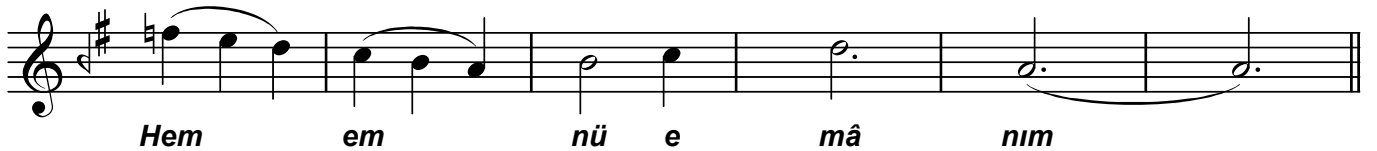
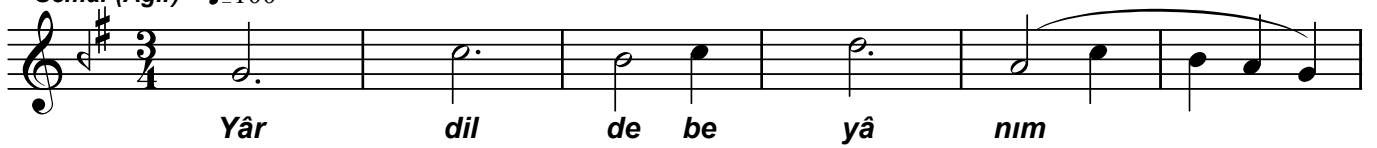
"Neylerde Segâh nağmesi dillerde sadâsı"



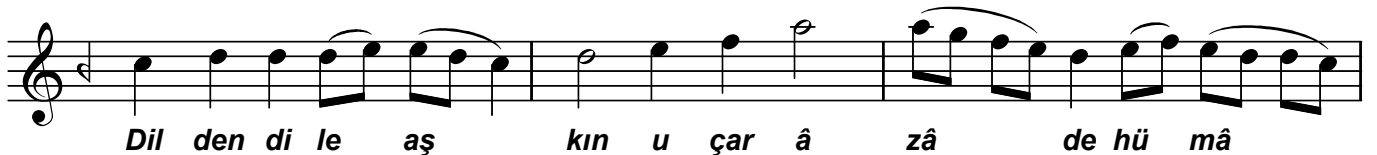
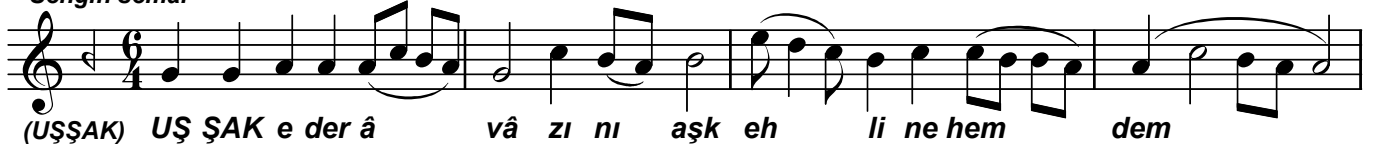
Berefşan ♩=74



Semâi-(Ağır) ♩=100



Sengin semâi



"Neylerde Segâh nağmesi dillerde sadâsı"

The image shows a musical score for a song. It consists of ten staves of music, each with a corresponding line of lyrics in Turkish. The music is written in a single treble clef with a key signature of one sharp (F#) and a 2/4 time signature. The lyrics are:
1. sı Yâr cev he ri kâ nim (SAZ.../.....)
2. Hem vîr di ze bâ nim (SAZ.../.....)
3. (SEGAH) Ter dil li ter dil li ter dil li te nenen Ter dil li ter dil li ter dil li te nenen
4. Yâr yâr yâr yâr câ nim ye le lel li
5. Dost dost ömrüm ye le lel li
6. Söy ler se Mü rîd yâ re SE GÂH Kâ R'ı YA VAŞ
7. ÇA Ol maz mı a yân â le mi â
8. hen geve fâ sı (SAZ.../.....) Yâr yâ re a yâ
9. nim Ağ yâ re nihâ nim SON
The score is attributed to Dr. Semra Özgün.

Dr.Semra Özgün