

MUHAYYER PEŞREV

Yusuf Paşa

Usûl: Muhammes (Yürük)

1. Hane

Musical notation for the first Hane of the Muhayyer Peşrev, consisting of four staves of music in 4/4 time, starting with a treble clef and a key signature of one sharp (F#). The first staff begins with a treble clef and a 4/4 time signature. The music features a series of eighth and sixteenth notes, with a triplet of eighth notes in the second measure of the first staff. The piece concludes with a double bar line.

Teslim

Musical notation for the Teslim section of the Muhayyer Peşrev, consisting of three staves of music in 4/4 time, starting with a treble clef and a key signature of one sharp (F#). The first staff begins with a treble clef and a 4/4 time signature. The music features a series of eighth and sixteenth notes, with two triplet markings over eighth notes in the second and third measures of the first staff. The piece concludes with a double bar line.

2. Hane'ye

3. Hane'ye

4. Hane'ye

Karar

Musical notation for the second Hane of the Muhayyer Peşrev, consisting of one staff of music in 4/4 time, starting with a treble clef and a key signature of one sharp (F#). The staff begins with a treble clef and a 4/4 time signature. The music features a series of eighth and sixteenth notes, with triplet markings over eighth notes in the second, third, and fourth measures. The piece concludes with a double bar line.

2. Hane

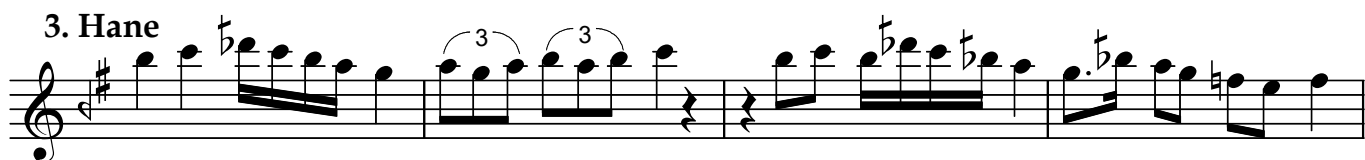
Musical notation for the second Hane of the Muhayyer Peşrev, consisting of two staves of music in 4/4 time, starting with a treble clef and a key signature of one sharp (F#). The first staff begins with a treble clef and a 4/4 time signature. The music features a series of eighth and sixteenth notes, with a final note marked with a fermata. The second staff continues the melody with eighth and sixteenth notes, concluding with a double bar line.

MUHAYYER PEŞREV

Yusuf Paşa



3. Hane



4. Hane



Dr. Semra Özgün
Şubat 2023