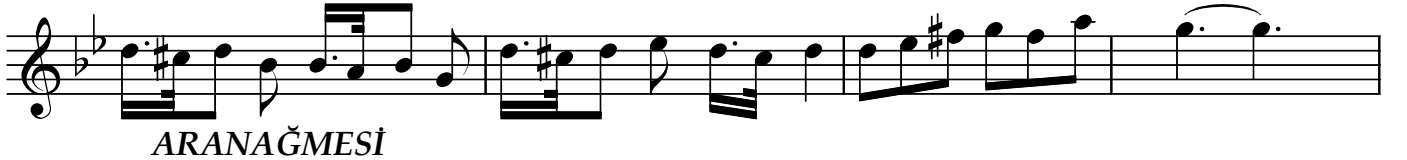
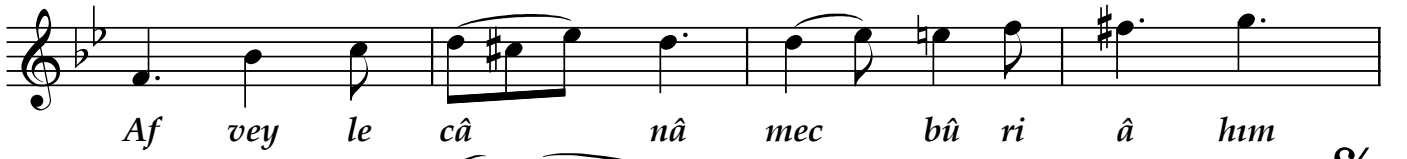
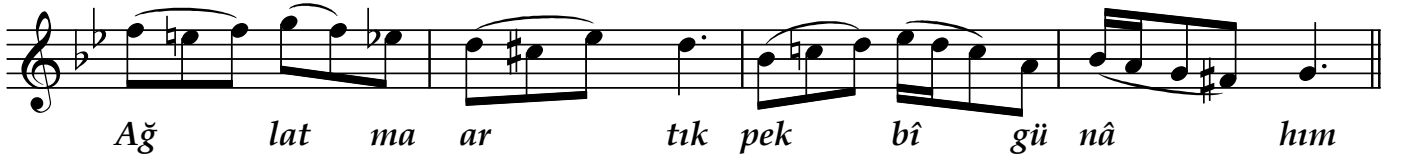
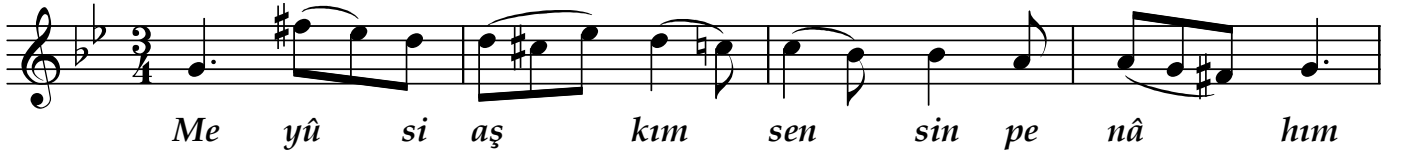


NIHÂVEND ŞARKI

"Meyûs-i aşkım sensin penâhım"

Beste ; Selanikli Ahmet Ef.
Güfte ; -

Usûl ; Semâi



Dr.Semra özgün
Ocak-2014

Meyûs-i aşkım sensin penâhım
Ağlatma artık pek bî-günâhım
Afveyle cânâ mecbûr-i âhım
Ağlatma artık pek bî-günâhım