

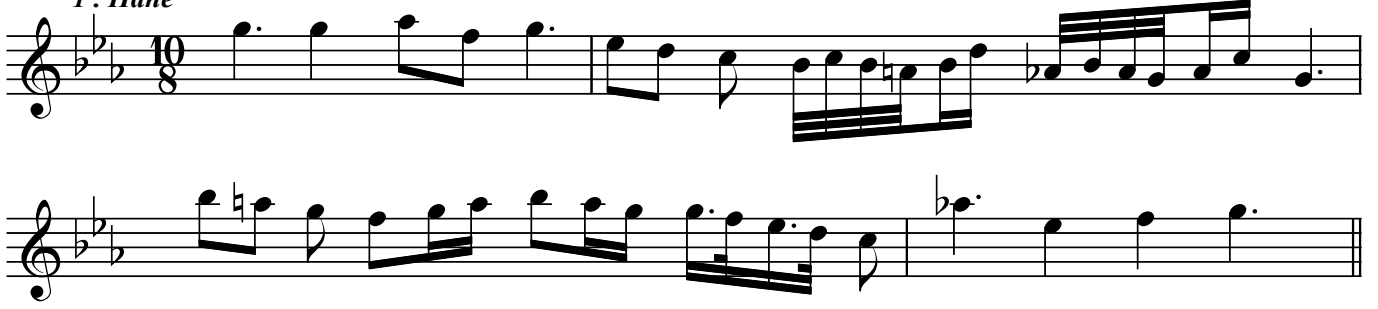
EMİN ONGAN
ÜSKÜDAR MÜSİKİ
CEMİYETİ NEŞRİYATI

KÜRDİLİHİCAZKÂR SAZ SEMÂİSİ

Usûl ; Aksaksemâi

Refik Tal'at Bey(ALPMAN)

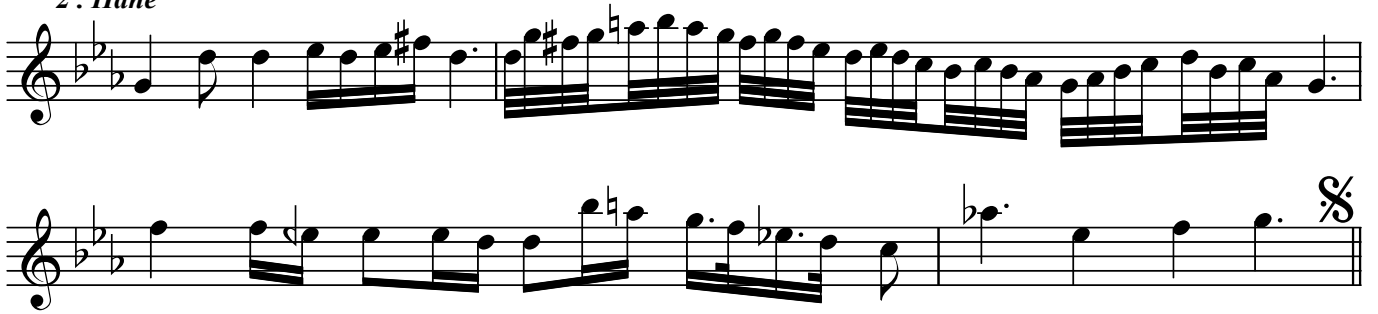
1. Hane



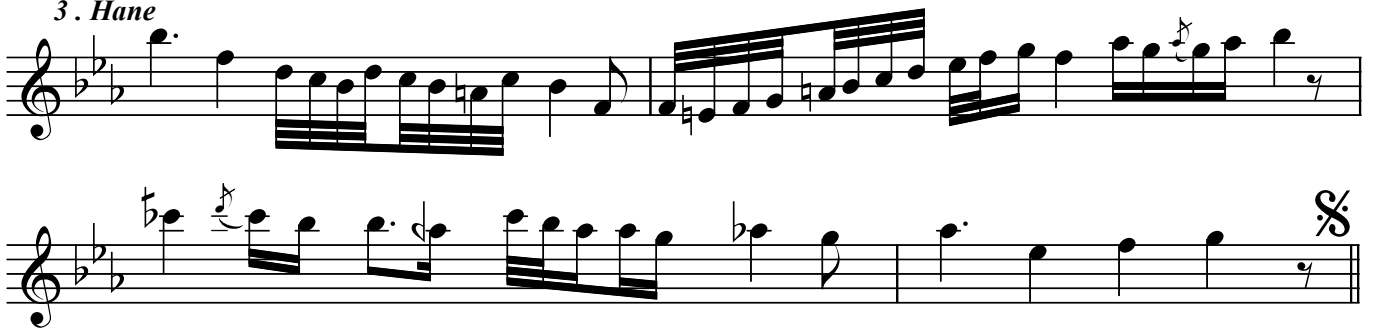
Teslim



2. Hane



3. Hane



4. Hane



KÜRDİLİHİCAZKÂR SAZ SEMÂİSİ

Refik Tal'at Bey(ALPMAN)

Musical notation for the first part of the piece, consisting of three staves. The first staff has a treble clef, a key signature of two flats, and a 2/4 time signature. It features a sequence of eighth notes with triplets and a single note. The second staff continues the sequence with more triplets. The third staff concludes the sequence with a double bar line and repeat signs.

"Yürüksemâi"

Musical notation for the second part of the piece, consisting of two staves. The first staff has a treble clef, a key signature of two flats, and a 6/8 time signature. It features a sequence of eighth notes with a double bar line and repeat signs. The second staff continues the sequence with more eighth notes and triplets, ending with a double bar line and repeat signs.

Dr.Semra Özgün
Nisan-2015