

MAHUR ŞARKI

Beste: Dr.Alâeddin YAVAŞCA
Güfte: Güzide TARANOĞLU

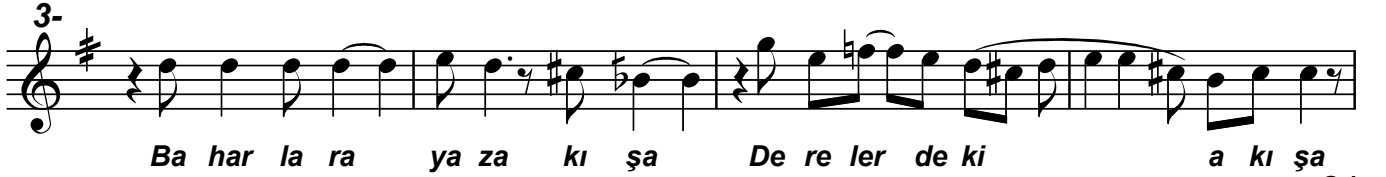
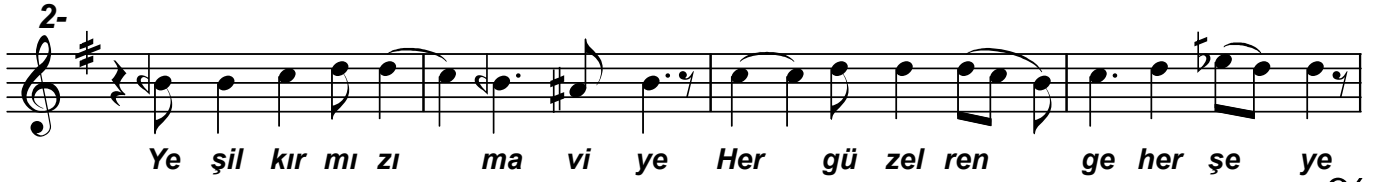
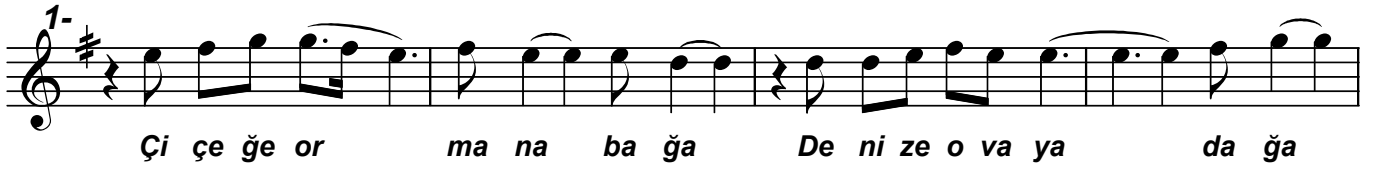
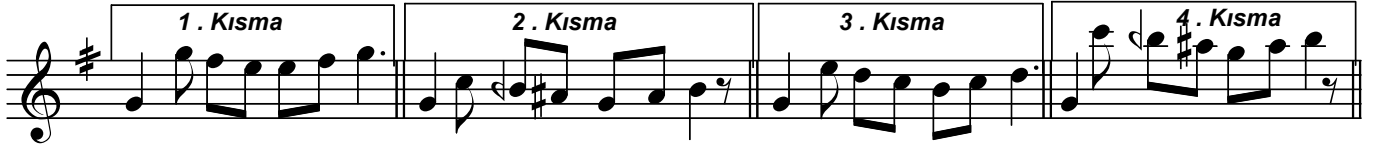
Usûl: Curcuna/Yürük Semâi

"Çiçeğe , ormana , bağa"

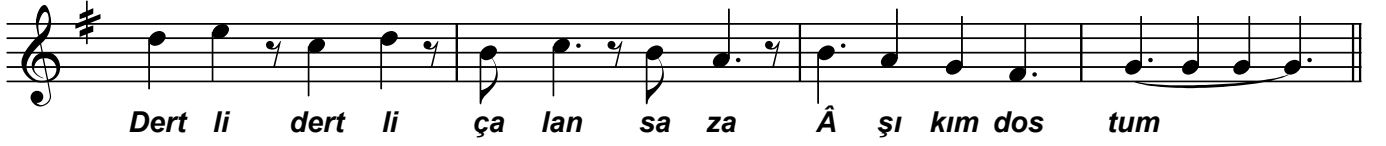
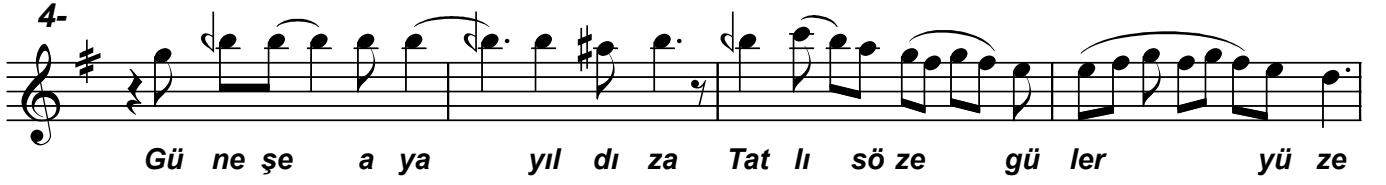
(Beste tar.:01.11.1967-Taksim)



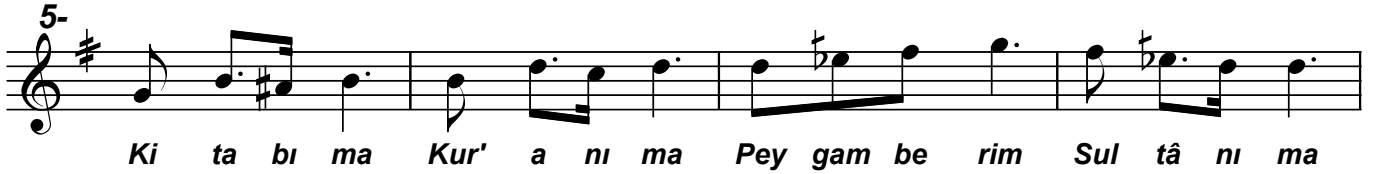
ARANAĞMESİ



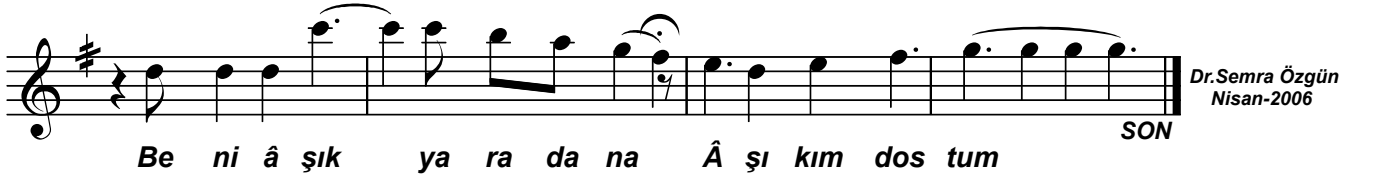
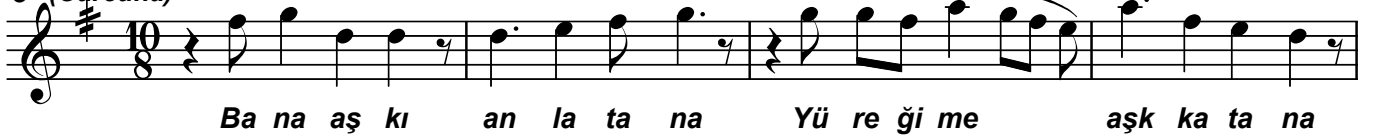
"Çiçeğe , ormana ,bağa"



(Yürük Semâi)



6- (Cırcuna)



Dr.Semra Özgün
Nisan-2006

-1-

Çiçeğe , ormana , bağa
Denize , ovaya , dağa
Hatta hatta tek yaprağa
Âşıkım dostum .

-2-

Yeşil , kırmızı , maviye
Her güzel renge herşeye
İçimden taşan sevgiye
Âşıkım dostum .

-3-

Baharlara yaza kışa
Derelerdeki akışa
Güzel gözdeki bakışa
Âşıkım dostum .

-4-

Güneşe , aya , yıldıza
Tatlı söze güler yüze
Dertli dertli çalan saza
Âşıkım dostum .

-5-

Kitabıma , Kur'anıma
Peygamberim , Sultânıma
Bir de şu tatlı cânıma
Âşıkım dostum .

-6-

Bana aşkı anlatana
Yüreğime aşk katana
Beni âşık yaradana
Âşıkım dostum .