

SÛZİDİL ŞARKI

"Her bakışın şafaktan derlenen bir gül bana"

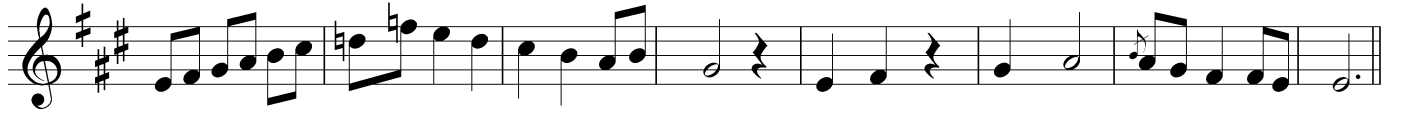
Usûl ; Semâi

Beste ; Necdet VAROL

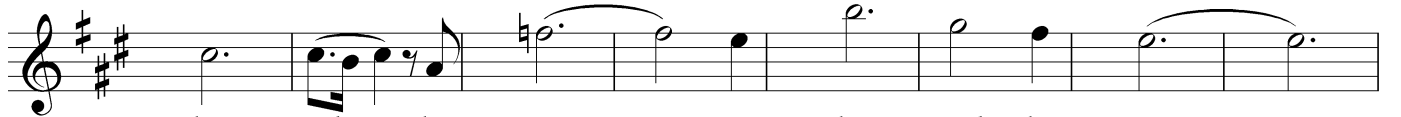
Güfte ; İskender Cenap EGE



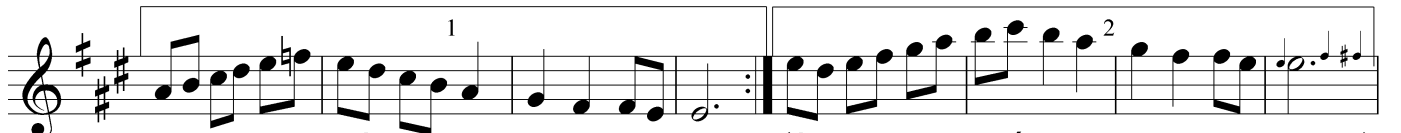
ARANAĞMESİ



Her ba kışın şa fak tan der le nen



bir gül ba na bir gül ba na



(SAZ...../.....) (SAZ...../.....)



Aş kın la ya nar yi ne ko şar bu gö nül sa na

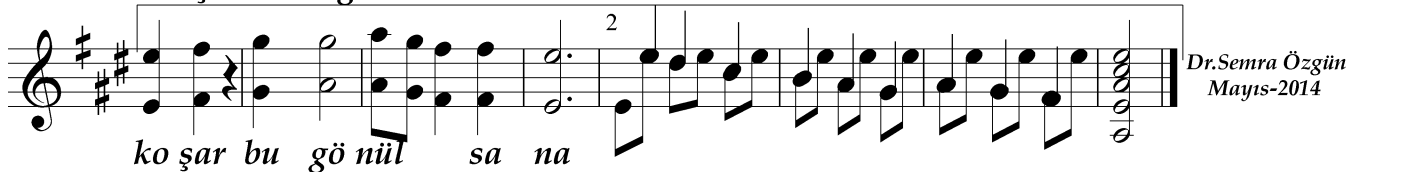
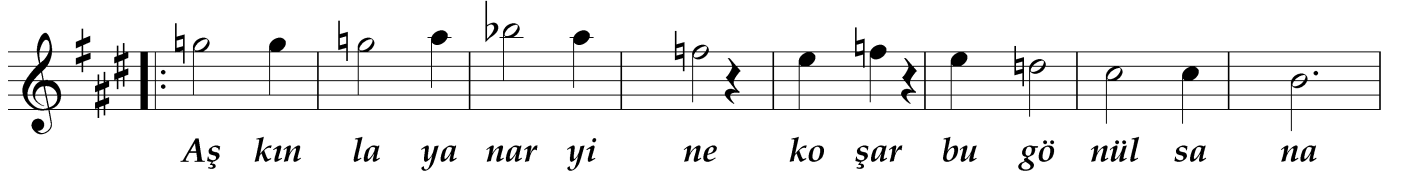
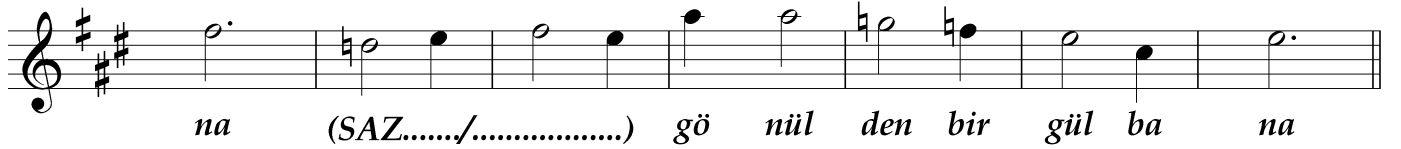
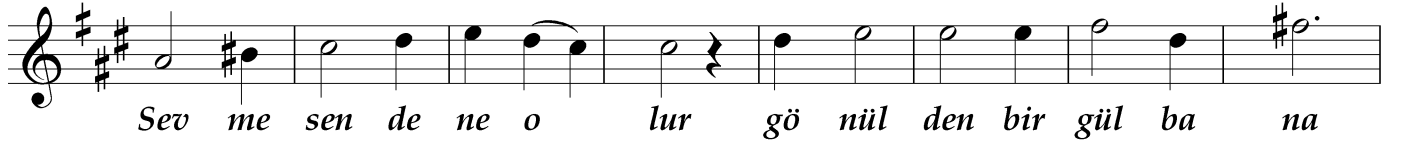
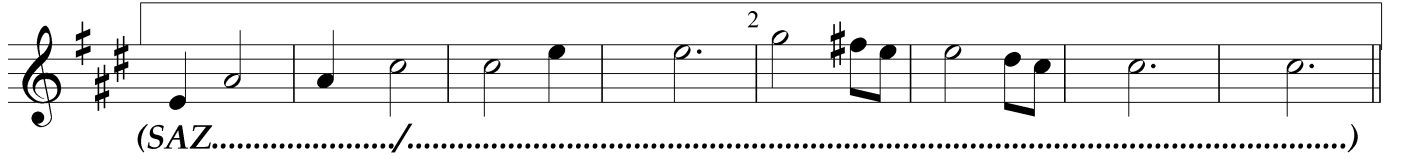


(SAZ...../.....) Aş kın la ya nar yi ne (SAZ..../.....)



ko şar bu gö nül sa na (SAZ...../.....)

"Her bakışın şafaktan derlenen bir gül bana"



Dr.Semra Özgün
Mayıs-2014

Her bakışın şafaktan derlenen bir gül bana
Aşkınla yanar yine koşar bu gönül sana

Sevmesende ne olur gönülden bir gül bana
Aşkınla yanar yine koşar bu gönül sana