

ŞEVKEFZA PEŞREV

Usûl ; Devr-i kebir

Neyzen Raşid Efendi

1. Hane

The first hane consists of four staves of music. The first staff begins with a treble clef, a key signature of two flats (B-flat and E-flat), and a 2/4 time signature. The melody starts with a quarter rest, followed by a quarter note G4, a quarter note F4, and a quarter note E4. The second staff continues the melody with a quarter note D4, a quarter note C4, and a quarter note B3. The third staff features a quarter note A3, a quarter note G3, and a quarter note F3. The fourth staff concludes the hane with a quarter note E3, a quarter note D3, and a quarter note C3.

Teslim

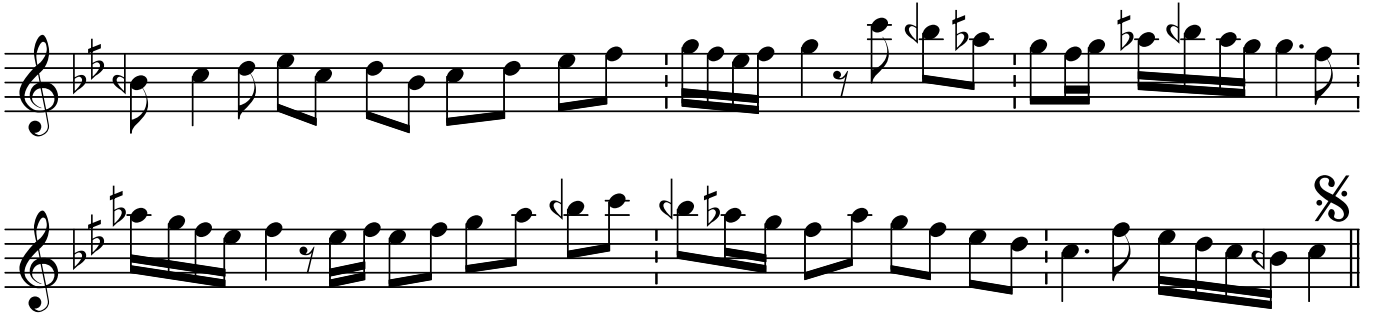
The Teslim section consists of four staves of music. The first staff begins with a treble clef, a key signature of two flats, and a 2/4 time signature. The melody starts with a quarter rest, followed by a quarter note G4, a quarter note F4, and a quarter note E4. The second staff continues the melody with a quarter note D4, a quarter note C4, and a quarter note B3. The third staff features a quarter note A3, a quarter note G3, and a quarter note F3. The fourth staff concludes the section with a quarter note E3, a quarter note D3, and a quarter note C3.

2. Hane

The second hane consists of two staves of music. The first staff begins with a treble clef, a key signature of two flats, and a 2/4 time signature. The melody starts with a quarter note G4, a quarter note F4, and a quarter note E4. The second staff continues the melody with a quarter note D4, a quarter note C4, and a quarter note B3.

ŞEVKEFZA PEŞREV

Neyzen Raşid Efendi



3. Hane



4. Hane



Dr.Semra Özgün
Nisan-2015
Kay.;Mual.İsmail Hakkı B.