

## ŞEHNAZ PEŞREV

Usûl: Muhammes

Beste: Prof. Dr. Alâeddin YAVAŞCA

♩ = 70

(Beste tar.: 4 . Kasım . 2002

Birinci Hane

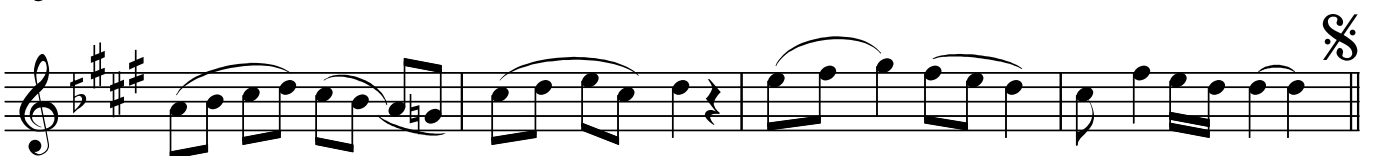
Pınarhisar -ATAKÖY)



§ Mülazime



İkinci Hane



Üçüncü Hane

Şehnaz Peşrev



Musical notation for Üçüncü Hane, consisting of four staves. The key signature is one flat and three sharps (B-flat, F-sharp, C-sharp, G-sharp). The notation includes various rhythmic values, accidentals, and phrasing slurs. The piece concludes with a double bar line and a fermata symbol.

Dördüncü Hane



Musical notation for Dördüncü Hane, consisting of four staves. The key signature is one flat and three sharps (B-flat, F-sharp, C-sharp, G-sharp). The notation includes various rhythmic values, accidentals, and phrasing slurs. The piece concludes with a double bar line and a fermata symbol.