

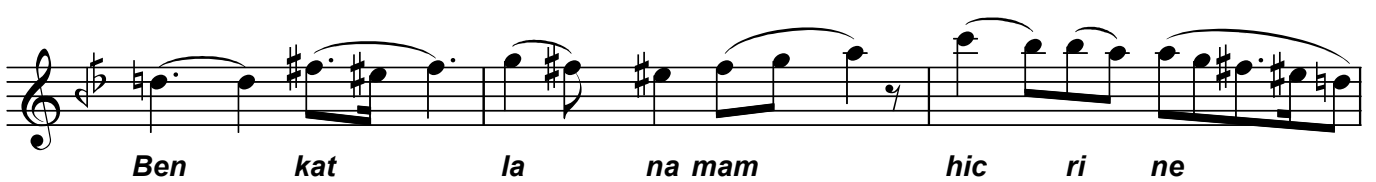
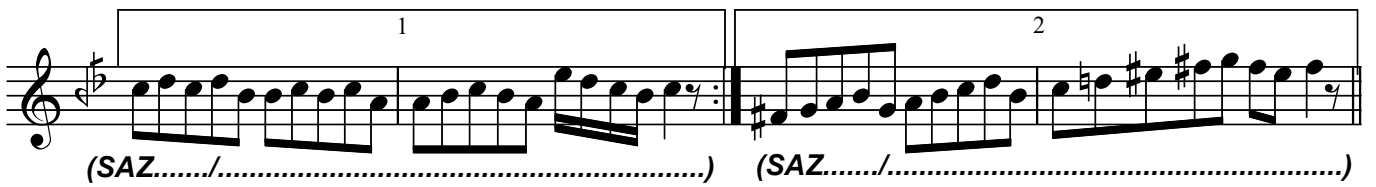
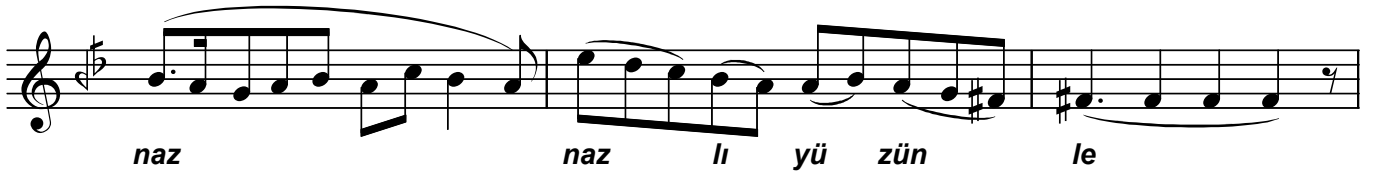
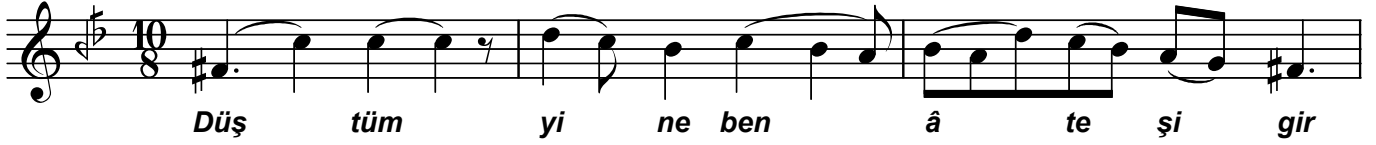
BESTENİGÂR ŞARKI

Usûl: Curcuna

♩=128

"Düşüm yine ben âteş-i girdâbe hüznle"

Beste ve Güfte:
Dr. Alâeddin YAVAŞCA
(Beste tar.: 08.08.1952-Florya)



"Düştüm yine ben âteş-i girdâbe hüznle"

Ben kat la na mam hic ri ne

tat tat tat lı gü zel

kız (SAZ...../.....)

ARANAĞMESİ

Dr.Semra özgün
Mart-2006

**Düştüm yine ben âteş-i girdâbe hüznle
Ağlar görerek gözlerini nazlı yüzünle
Ben katlanamam hicrine tatlı güzel kız
Ağlar görerek gözlerini nazlı yüzünle .**