

DÜĞÂH KÂR-I NÂTİK Beste: Prof.Dr. Alâeddin YAVAŞCA

Güfte:Mustafa TAHRALI

Usûl:Değişmeli

"Âh edip ağla gönül hasret-i dildâr ile sen"

7-14 /2/1995 Vişnezâde

Şehr-i Ramazan

Hafif ♩ = 84

(DÜGAH) Ten nâ ten nâ ten ne ni ten nâ
Di ri di ri di ri ney vay
Yâ lâ ye le lel yel le le yâ lâ
Yel le le lel li ney vay (SAZ.../.....)

Ağır aksak ♩ = 42

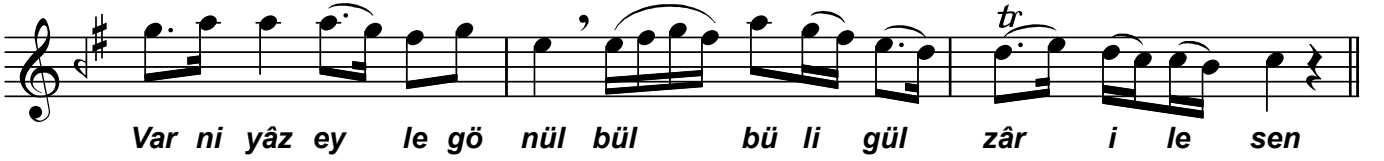
.....) Âh e dip ağ la gönül has
re ti dîl dâr i le sen (SAZ.../.....)
Bir DÜ GAH sey re dü şüp cez
be i dî dâr i lesen (SAZ.../.....)

Sengin semâi ♩ = 84

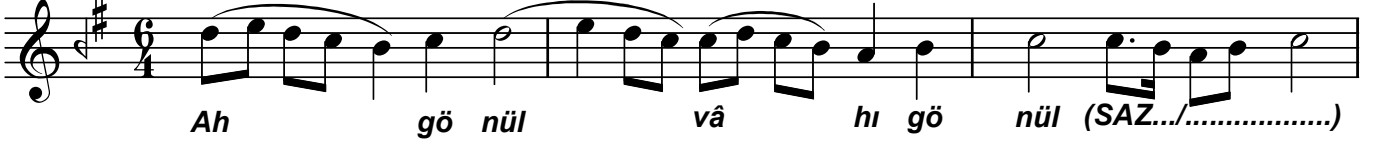
Ah Gö nül vâ hî gö nül (SAZ.../.....)
Gö nül ey vâ hî gö nül (SAZ)

Âh edip ağla gönül hasret-i dildâr ile sen -2

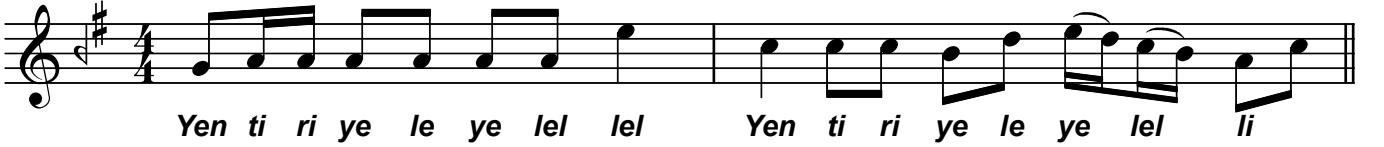
Sofyan-Ağır ♩ = 64



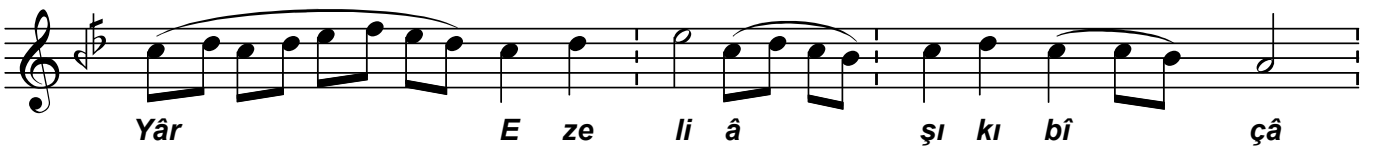
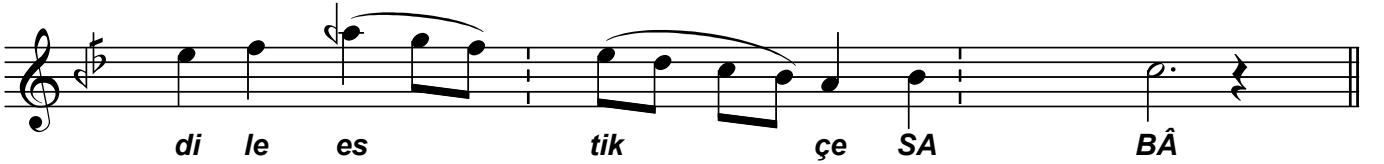
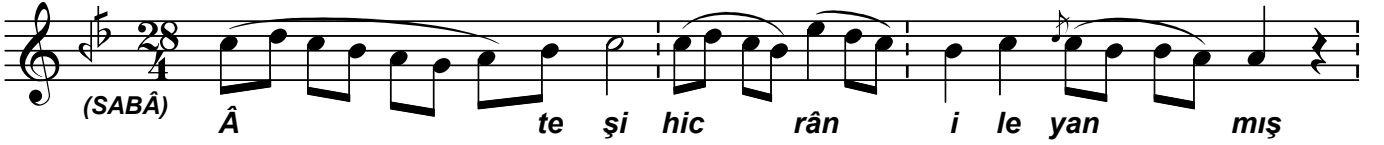
Sengin semâi ♩ = 120



Sofyan ♩ = 64



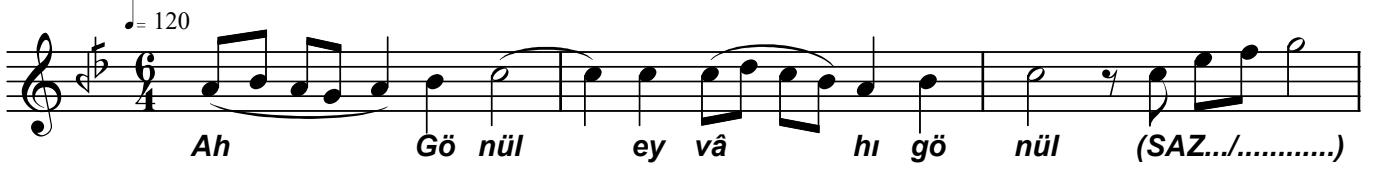
Devr-i kebir ♩ = 120



Sengin semâi

Âh edip ağla gönül hasret-i dildâr ile sen -3

♩ = 120



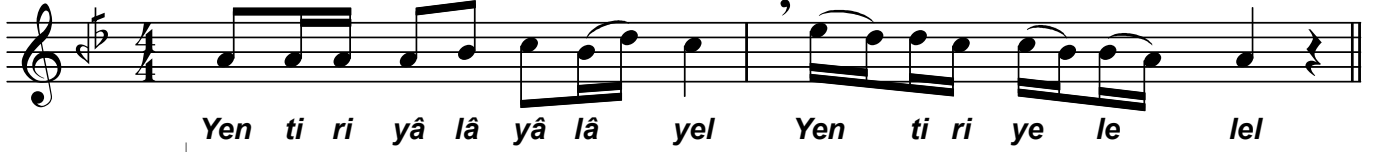
Ah Gö nül ey vâ hı gö nül (SAZ.../.....)



Vâh Gö nül ey vâ hı gö nül

Sofyan

♩ = 64



Yen ti ri yâ lâ yâ lâ yel Yen ti ri ye le lel

Muhammes

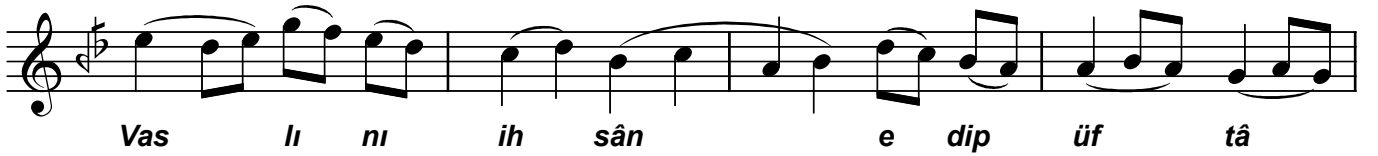
♩ = 120



(BESTENİGÂR) BES TE Nİ GÂR sey ri le Hün kâ



ra ni dâ et se di lin



Vas lı ni ih sân e dip üf tâ



de ye et mez mi ve fâ

Sengin semâi

♩ = 120



Ah Gö nül ey va hı gö nül (SAZ.../.....)



vâh gö nül ey vâ hı gö nül (SAZ.../.....)

Sofyan

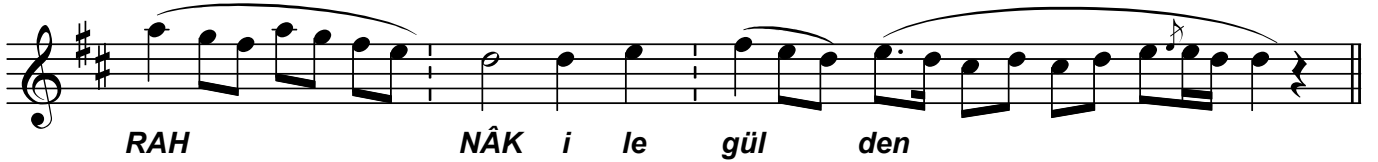
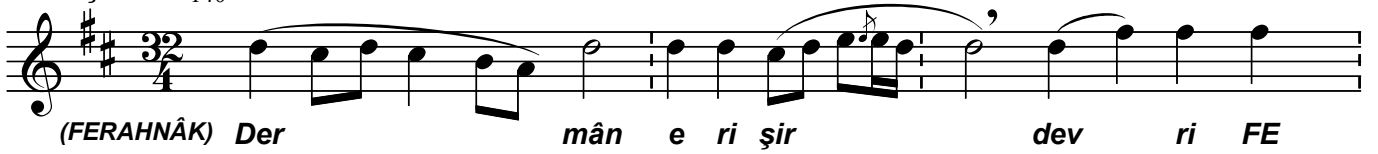
♩ = 70



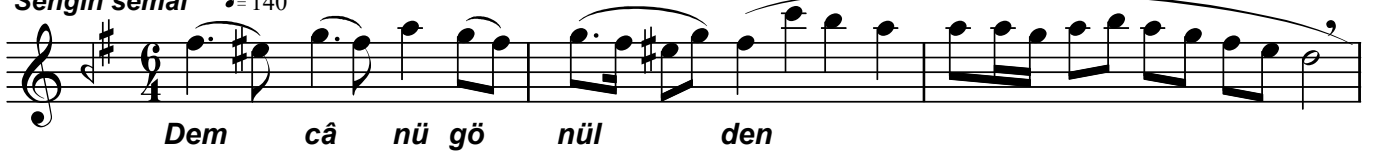
Yel le le lel li lel li yâr Yel le le lel li lel li dost

Âh edip ağla gönül hasret-i dildâr ile sen -4

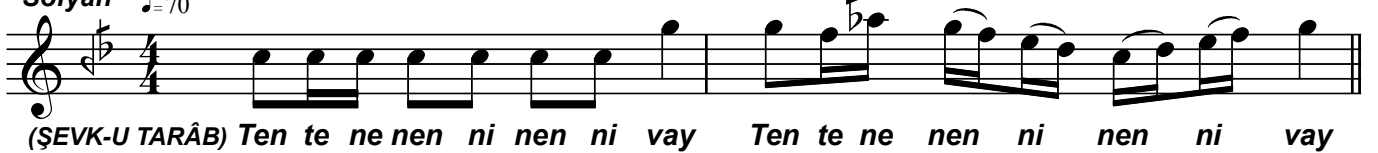
Berefsan ♩ = 140



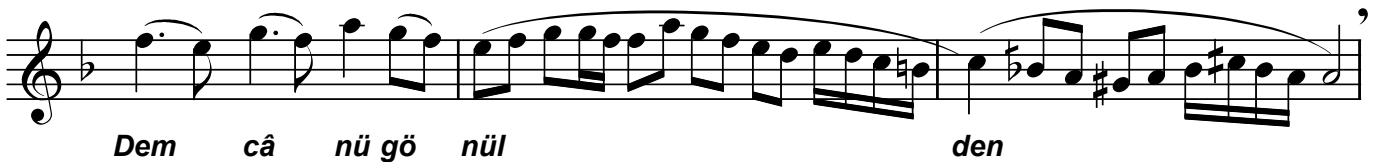
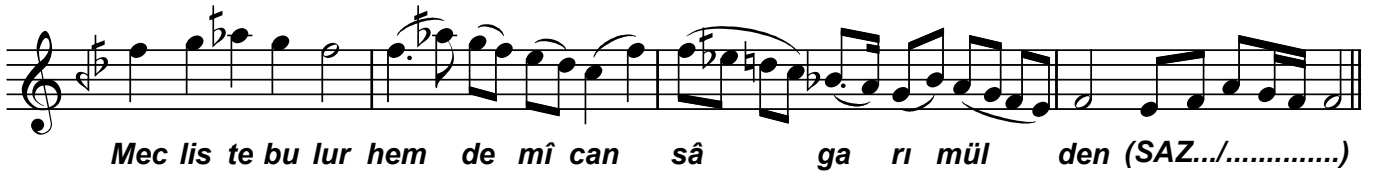
Sengin semâi ♩ = 140



Sofyan ♩ = 70



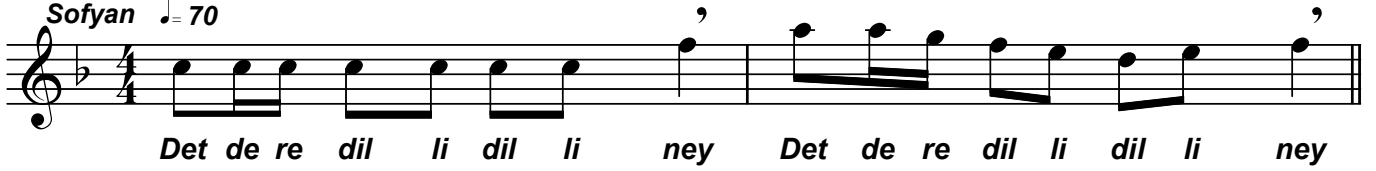
Sengin semâi ♩ = 140



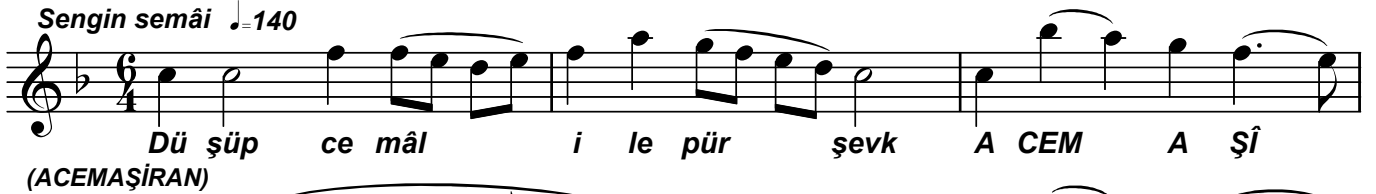
Âh edip ağla gönül hasret-i dildâr ile sen -5



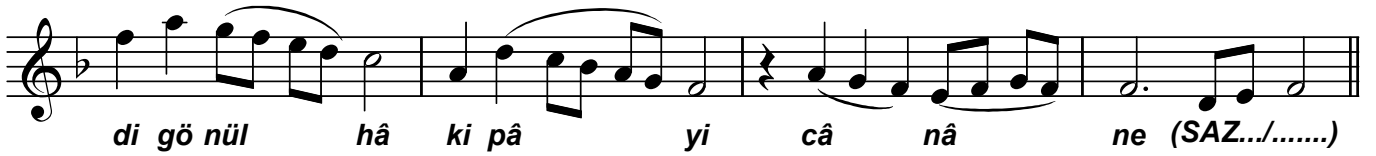
Sofyan ♩=70



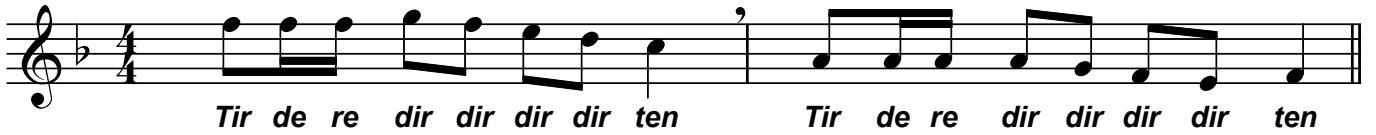
Sengin semâi ♩=140



(ACEMAŞIRAN)



Sofyan ♩=70



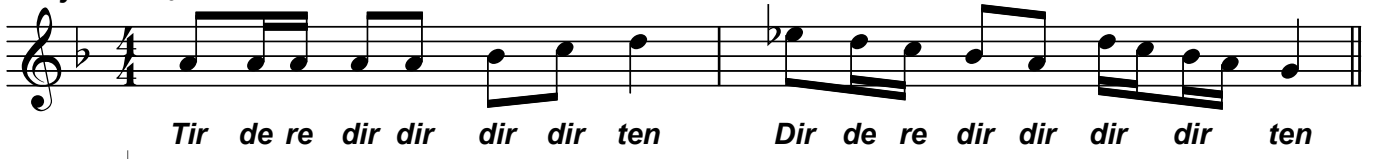
Sengin semâi ♩=140



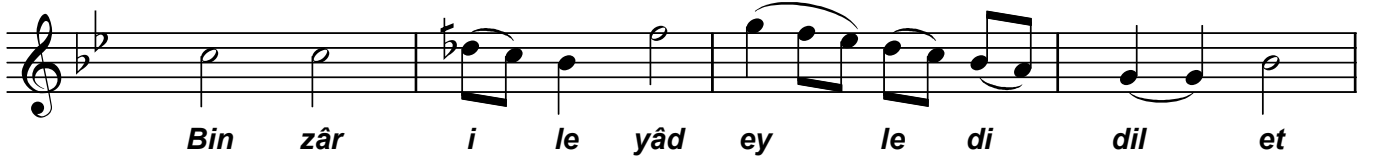
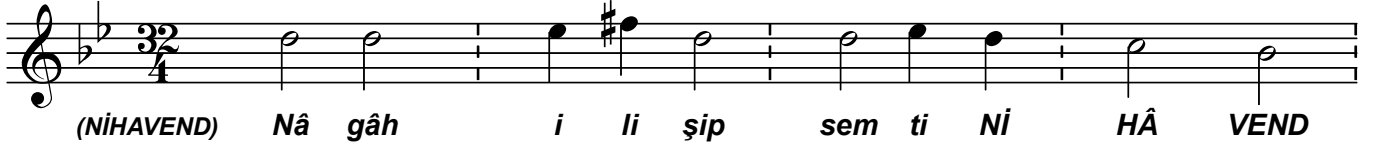
Âh edip ağla gönül hasret-i dildâr ile sen -6



Sofyan ♩ = 70



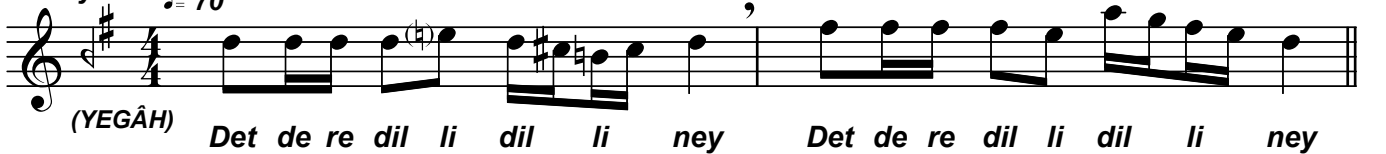
Hafif ♩ = 140



Sengin semâi ♩ = 140



Sofyan ♩ = 70



Âh edip ağla gönül hasret-i dildâr ile sen -7

Sofyan ♩=128



Yâr ey le di bir renk i le ih sâ nı nı



câ ne Hay rân o lup el



vâ nı na dîl bul du YE GÂ H'i

Sengin semâi ♩=128



Af fey le gü nâ him



lût fun da pe nâ him

Sofyan ♩=70



Yen ti ri ye le ye lel li Yen ti ri ye le ye lel li

Sengin semâi ♩=140



(RAST) RAST a çı lıp dem tu tar â henk i le sâ



zen de i dîl Per de yi al



miş o kur â vâz i le hâ nen de i dîl (SAZ...../.....)



Yâr i le dîl yâr o la lı

Âh edip ağla gönül hasret-i dildâr ile sen -8

yâr di le hün kâr o la lı

Sofyan ♩=70

Yen ti ri yâ lâ yâ lâ yel Yen ti ri yâ lâ yâ lâ yel

Devr-i kebir ♩=120

Cil ve vü nâz ey le di dîl ler

de PE SEN DÎ DE gü zel

Lût fu a tâ ey le di â şık la ra

nâ dî de i dîl

Sengin semâi ♩=120

Yâr i le dîl yâr o la lı vay

Yâr di le hün kâr o la lı vay

Sofyan ♩=70

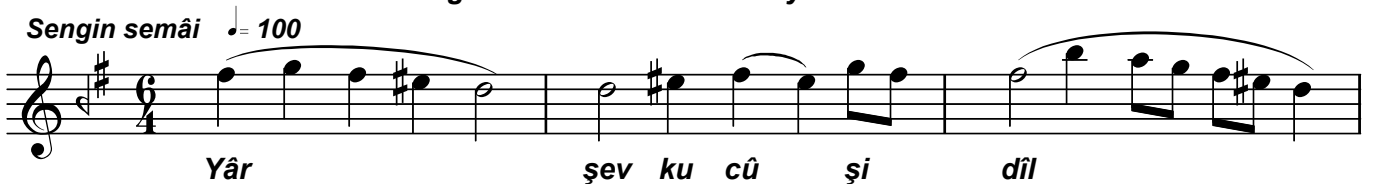
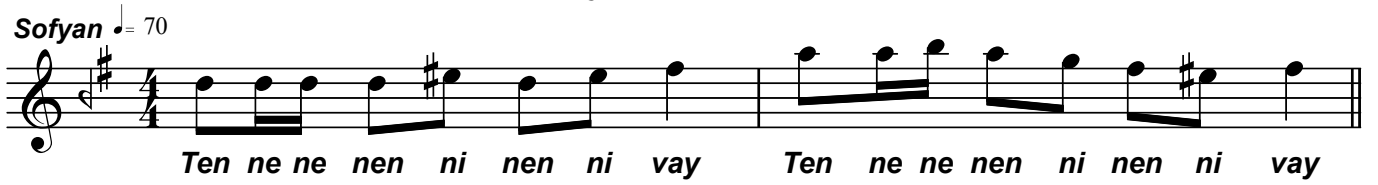
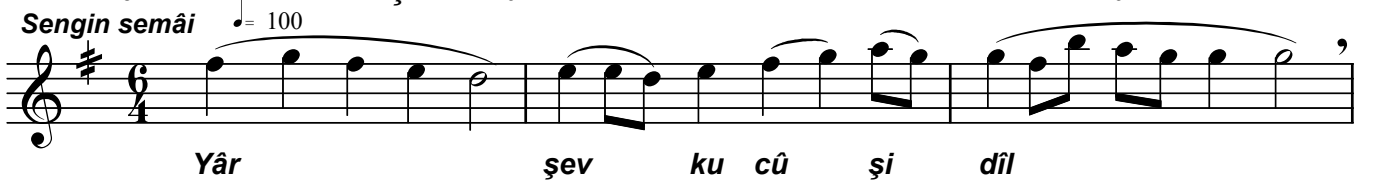
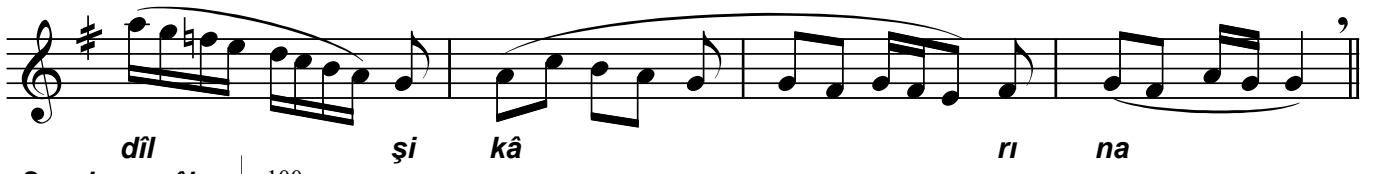
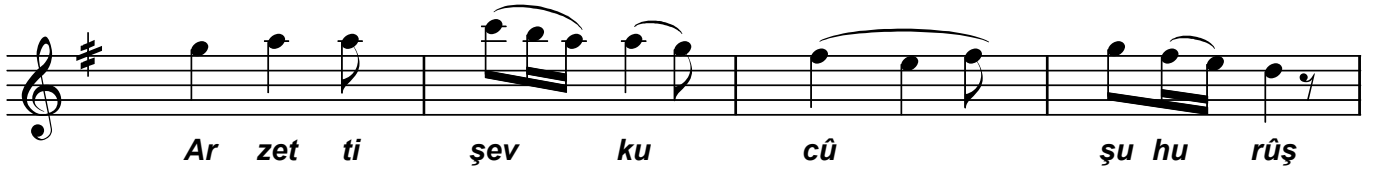
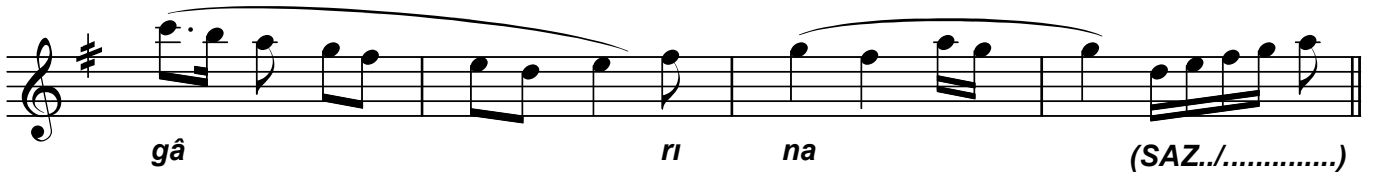
(MAHUR)

Yel le le lel li lel li yâr Yel le le lel li lel li dost

Türk aksağı ♩=128

MÂ HÛ R'u aç tı bül bü li gül şen ni

Âh edip ağla gönül hasret-i dildâr ile sen -9



Âh edip ağla gönül hasret-i dildâr ile sen -10

yâr yâr hu rû şî dil (SAZ.../.....)

Sofyan ♩=70

Det de re dil li dil li ney Det de re dil li dil li ney

140

(NÜHÜFT) Birsey ri NÜ HÜFT â şî ğa ref et ti ni ka bı

Dûr ey le yipağ yâ ri ni yâr sun du şa râ bı (SAZ.../.....)

Sengin semâi ♩=100

Yâr aç ti ni kâ bı

yâr sun du şa râ bı

Sofyan ♩=70

Det de re dil li dil li ney Det de re dil li dil li ney

Aksak ♩=98

Er miş ki di lin der ge hi dîl dâ re NE VÂ

sı (SAZ.../.....) Dön dür dü NE VÂ sey ri ne hen gâ

mı hi câ bı (SAZ.../.....)

Âh edip ağla gönül hasret-i dildâr ile sen -11

Sengn semâi ♩=140



Yâr aç tı ni kâ bın (SAZ...../.....)



Yâr sun du ce vâ bı (SAZ...../.....)

Sofyan ♩=70

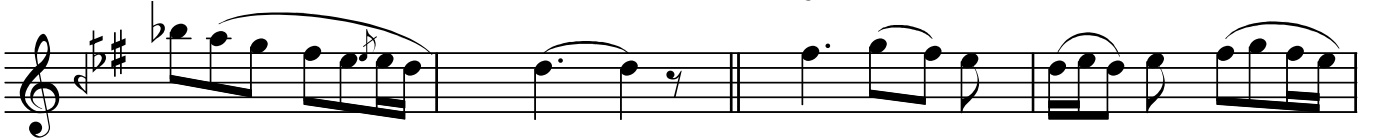


Yen ti ri ye le ye le lel Yen ti ri ye le ye le li

Yürük semâi ♩=160



(KARCIĞAR) Yâr KAR CI ĞAR o kur ey bül bül bı rak



fi gâ ni Bir lâh za şâ dü han



dân et gü lis tâ ni câ ni (SAZ...../.....)

Sengin semâi ♩=140



Bül bül bı rak fi gâ ni



şâd et ci hâ ni câ ni (SAZ)

Sofyan ♩=70



Yen ti ri yâ lâ yâ lâ yel Yen ti ri yel le lel le lel

Semâi ♩=140



(SÛZİNÂK) Dîl sey ri SÛ Zİ NÂK ey le

Âh edip ağla gönül hasret-i dildâr ile sen -12



dev ri çin de ar tık Hic rân de min de el



bet fer yâd tu tar ci hâ nı



Sengin semâi ♩ = 100

Bül bül bı rak fi gâ nı

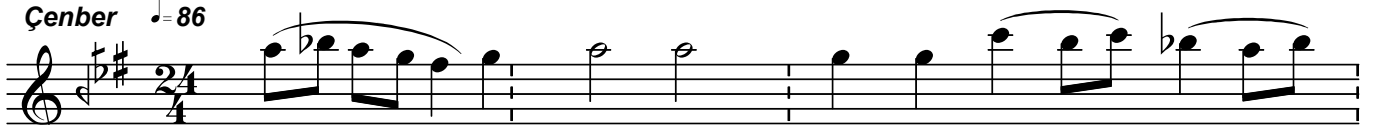


şâd et ci hâ nı câ nı



Sofyan ♩ = 70

Yel le le lel li lel li yâr Yel le le lel li lel li dost

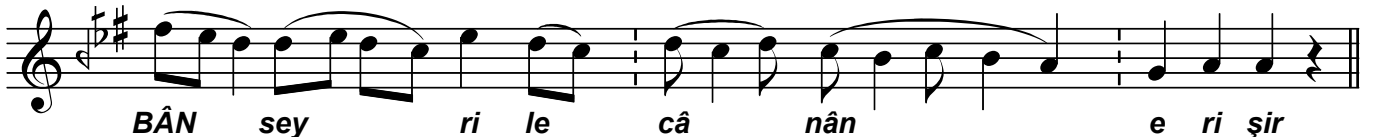


Çenber ♩ = 86

(BAYÂTİARABAN) Eh li aşk der di ne âh ey



le se der mân e ri şir Hem BE YÂ Tİ A RÂ

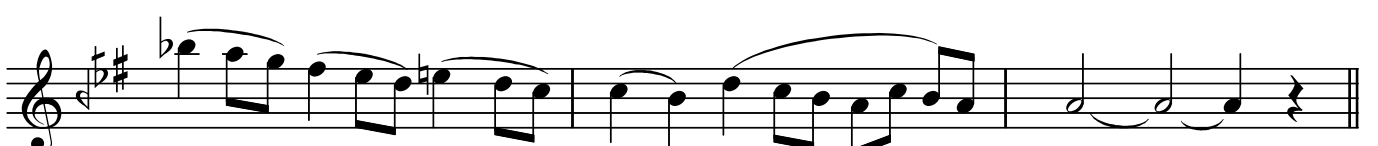


BÂN sey ri le câ nân e ri şir



Sengin semâi ♩ = 86

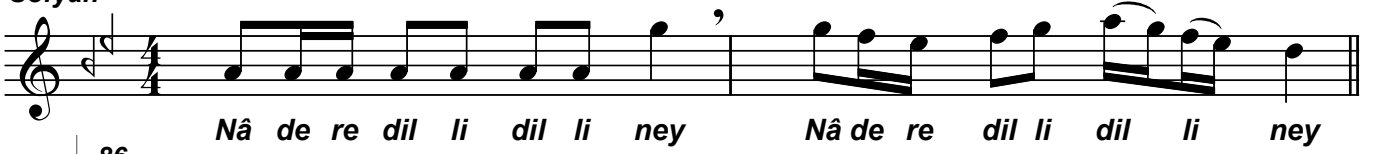
Der de der mâ nim a man



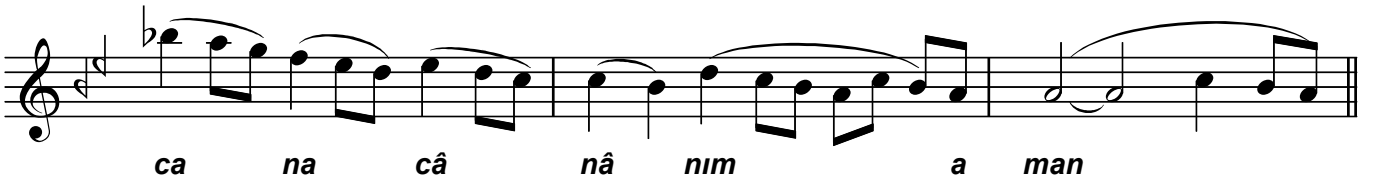
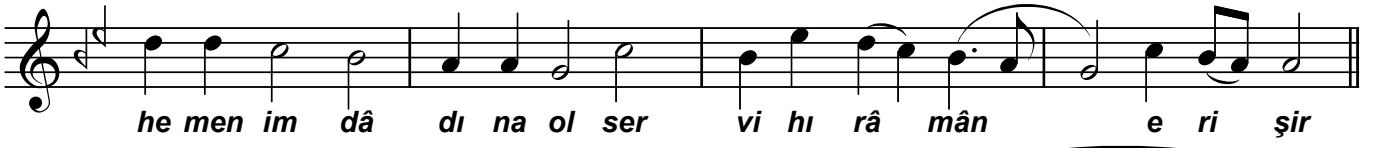
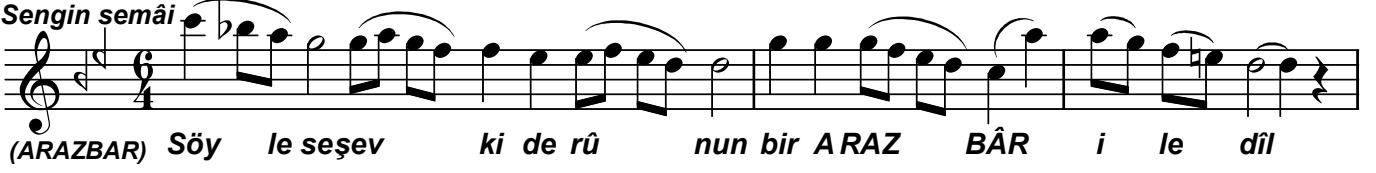
ca na câ nâ nim a man

Âh edip ağla gönül hasret-i dildâr ile sen -13

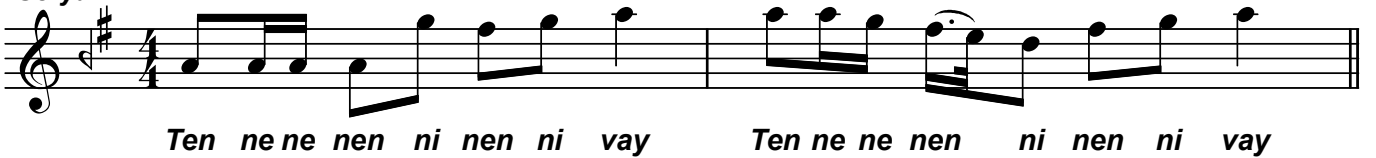
Sofyan ♩ = 70



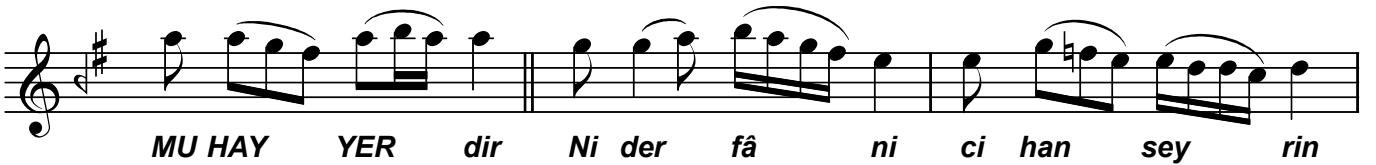
Sengin semâi ♩ = 86



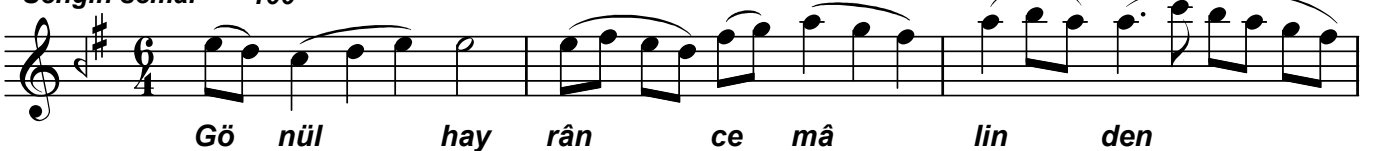
Sofyan



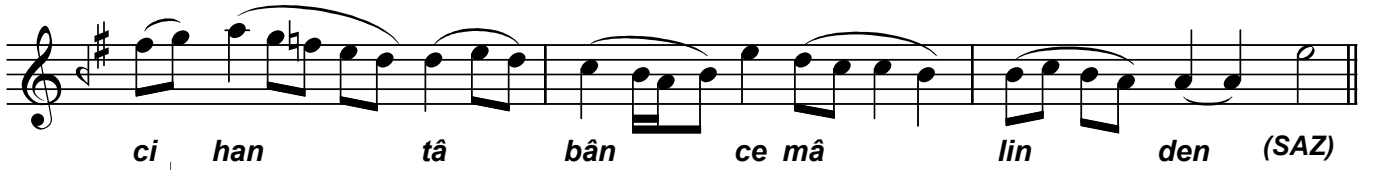
Düyek ♩ = 98



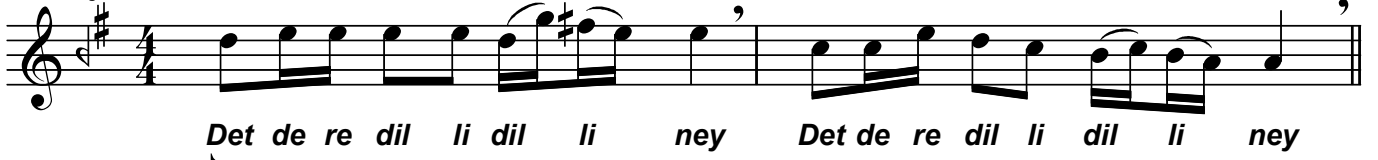
Sengin semâi ♩ = 100



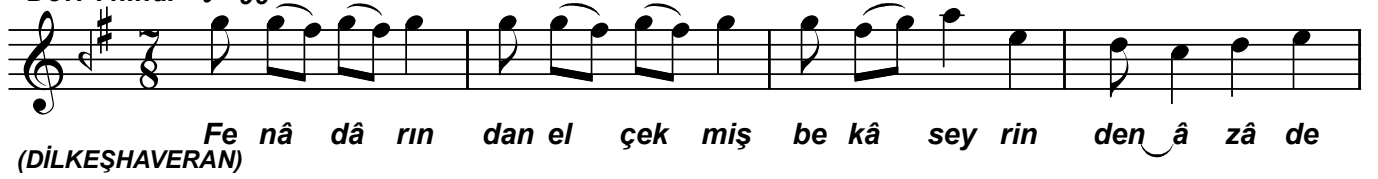
Âh edip ağla gönül hasret-i dildâr ile sen -14



Sofyan ♩=70



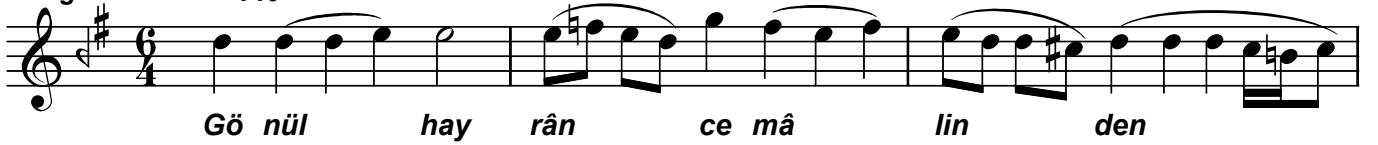
Devr-i hindi ♩=96



(DİLKEŞHAVERAN)



Sengin semâi ♩=140

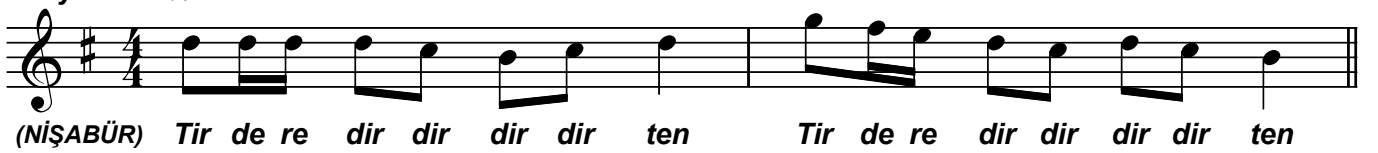


Gö nül hay rân ce mâ lin den



ci han tâ bân ce mâ lin den

Sofyan ♩=70



(NİŞABÜR) Tir de re dir dir dir dir ten Tir de re dir dir dir dir ten

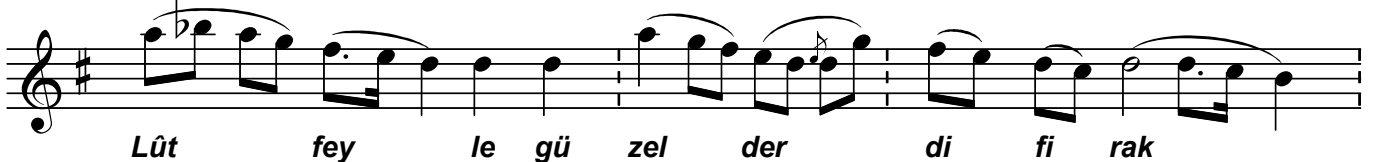
Devr-i kebir ♩=80



Dil şöy le ni yâz kıl dı Nİ ŞÂ BÜR



i le yâ re



Lût fey le gü zel der di fi rak

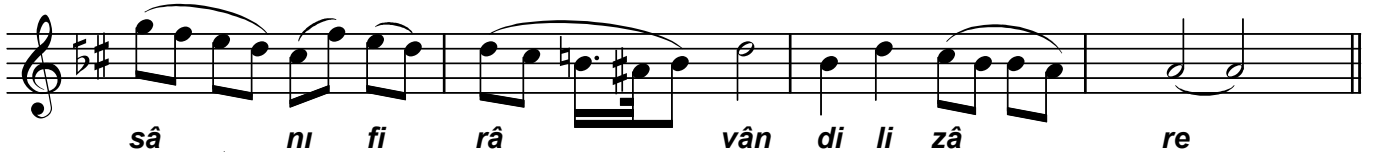
Âh edip ağla gönül hasret-i dildâr ile sen -15



Sengin semâi ♩=70



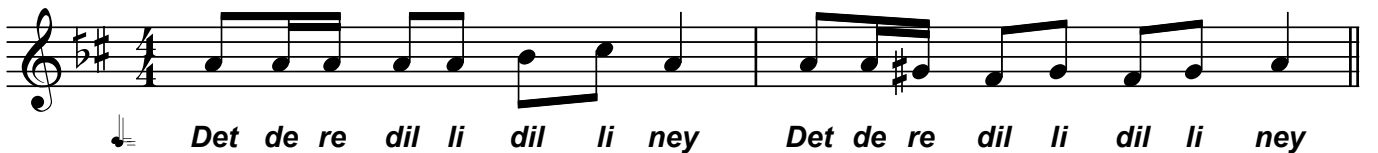
Sofyan ♩=70



Sengin semâi ♩=80



Sofyan ♩=70



Âh edip ağla gönül hasret-i dildâr ile sen -16

Çenber ♩ = 120



Ci hâ ni dil de DÜ GÂH KÂR o kur



YA VAŞ ÇA MÜ RÎD Va rıp ni yâz i le



ar zet hu zû ri hün kâ re

Sengin semâi ♩ = 120



A man me det kâ rım a man



Me det ke rem kâ rım a man

Hafif ♩ = 84



Ten nâ ten nâ ten ne ni ten nâ



Di ri di ri di ri ney vay



Yâ lâ ye le lel yel le le yâ lâ



Yel le le lel li ney vay SON

Dr.Semra
Özgün