

GÜLİZAR SAZ SEMÂİSİ - 1

Usûl; Aksak semâi

Tanbûri İZAK

1. Hane

Musical notation for the first hane, consisting of four staves of music in 10/8 time, starting with a treble clef and a key signature of one sharp (F#).

2. Hane

Musical notation for the second hane, consisting of three staves of music in 10/8 time, starting with a treble clef and a key signature of one sharp (F#). The notation includes various rhythmic patterns and melodic lines, with some measures marked with '1' and '2'.

3. Hane

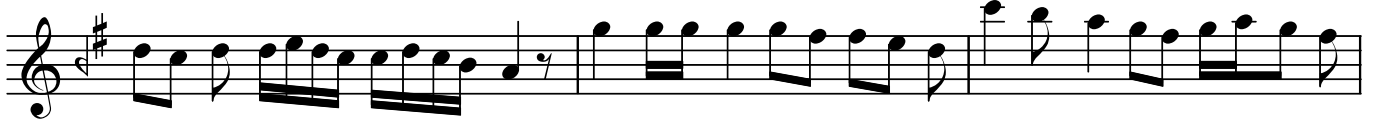
Musical notation for the third hane, consisting of three staves of music in 10/8 time, starting with a treble clef and a key signature of one sharp (F#).

GÜLİZAR SAZ SEMÂİSİ - 1

Tanbûri İZAK



4. Hane



Dr.Semra Özgün
Şubat-2021

"Hocam Prof.Dr.Alâeddin Yavaşca'nın yazdığı notadan aynen aktarılmıştır."