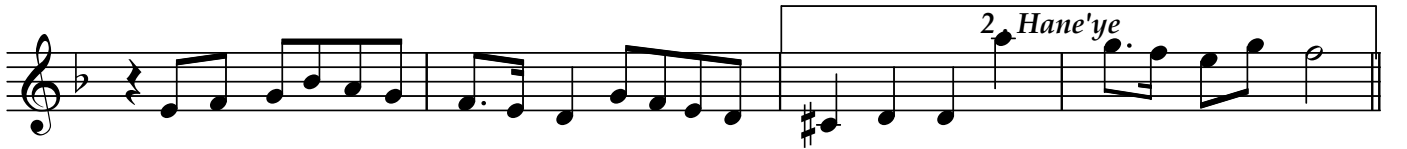


Usulü: Muhammes

FERAHEZA PEŞREVİ

Tanburi Cemil BEY
(1873-1916)

♩ = 68 1. Hane



"Ferahfeza peşrevi"

3. Hane

Tanburi.Cemil Bey

The 3. Hane section consists of four staves of music. The first staff begins with a treble clef, a key signature of one flat (B-flat), and a common time signature. The melody is composed of eighth and sixteenth notes, with some dotted rhythms. The second and third staves continue the melodic line with similar rhythmic patterns. The fourth staff concludes the section with a double bar line and a fermata symbol.

4. Hane

The 4. Hane section consists of four staves of music. The first staff begins with a treble clef, a key signature of one flat (B-flat), and a common time signature. The melody is composed of eighth and sixteenth notes, with some dotted rhythms. The second and third staves continue the melodic line with similar rhythmic patterns. The fourth staff concludes the section with a double bar line and a fermata symbol.

Dr.Semra Özgün
17.08.2001