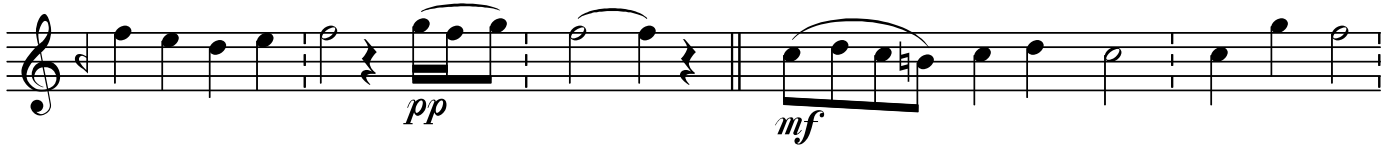


FERAHEFEZÂ PEŞREV

Hamamizade
İsmail Dede Efendi

♩ = 56

1. Hane



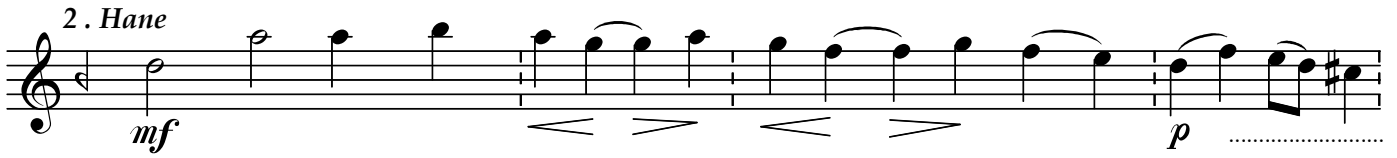
♩ Teslim



2. Hane'ye

3. Hane'ye

4. Hane'ye



"FERAHFEZÂ PEŞREV"

Hamamizade
İsmail Dede Efendi

3. Hane

Musical notation for the 3rd Hane, consisting of five staves. The notation includes various dynamics: *f*, *p*, *mf*, *pp*, and *f*. The piece concludes with a double bar line and a section symbol (§).

4. Hane

Musical notation for the 4th Hane, consisting of five staves. The notation includes dynamics: *mf*, *mf*, and *pp*. The piece concludes with a double bar line and a section symbol (§). The word "SON" is written at the end of the notation.

Dr.Semra Özgin
Ocak-2004

(Hocam Sayın Alâeddin Yavaşca'nın arşivinden alınmıştır.)