

EVÇ PEŞREV

Sadun AKSÜT
(Beste tar.;12.10.1962)

Usûl ; Muhammes

1. Hane

The first Hane is composed of four staves of music. The first staff begins with a treble clef, a key signature of one sharp (F#), and a 3/4 time signature. The melody starts with a quarter rest, followed by a quarter note G4, a quarter note A4, and a quarter note B4. The second staff continues the melody with a quarter note C5, a quarter note D5, and a quarter note E5. The third staff features a series of eighth notes and sixteenth notes, with a triplet of eighth notes. The fourth staff concludes the Hane with a quarter note F#5, a quarter note G5, and a quarter note A5.

Teslim

The Teslim section consists of three staves of music. The first staff begins with a treble clef, a key signature of one sharp (F#), and a 3/4 time signature. The melody starts with a quarter note G4, a quarter note A4, and a quarter note B4. The second staff continues the melody with a quarter note C5, a quarter note D5, and a quarter note E5. The third staff features a series of eighth notes and sixteenth notes, with a triplet of eighth notes. The section concludes with a quarter note F#5, a quarter note G5, and a quarter note A5.

2. Hane

The second Hane is composed of three staves of music. The first staff begins with a treble clef, a key signature of one sharp (F#), and a 3/4 time signature. The melody starts with a quarter note G4, a quarter note A4, and a quarter note B4. The second staff continues the melody with a quarter note C5, a quarter note D5, and a quarter note E5. The third staff features a series of eighth notes and sixteenth notes, with a triplet of eighth notes. The section concludes with a quarter note F#5, a quarter note G5, and a quarter note A5.

EVÇ PEŞREV

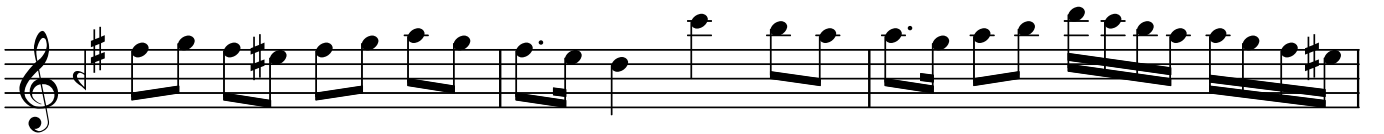
Sadun AKSÜT



3. Hane



4. Hane



Dr.Semra Özgün
Nisan-2015