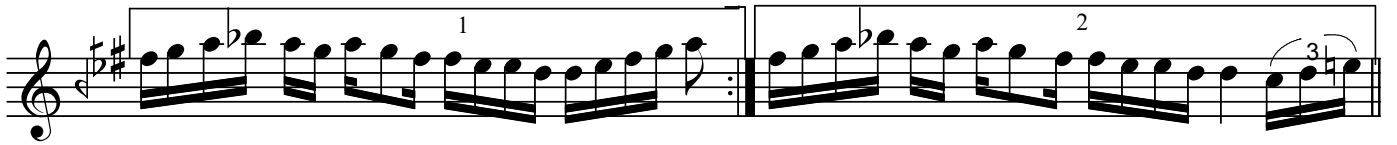
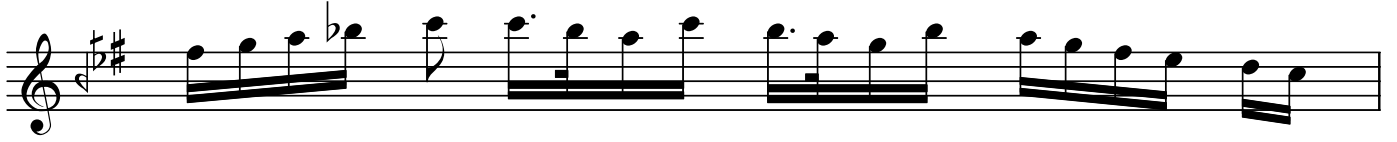


BAYÂTIARABAN SAZ SEMÂSİ

Usûl : Aksaksemâi

Muallim İsmâil Hakkı Bey

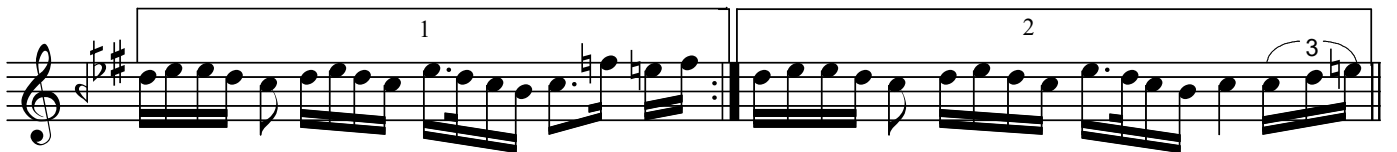
Birinci Hane



Teslim



İkinci Hane



BAYÂTİARABAN SAZ SEMÂİSİ

Üçüncü Hane

Muallim İsmail Hakkı Bey

Musical notation for the Üçüncü Hane section, featuring a treble clef, a key signature of one sharp (F#), and a 2/4 time signature. The notation consists of two staves. The first staff contains a sequence of eighth and sixteenth notes, with a repeat sign at the beginning. The second staff continues the sequence, including a triplet of eighth notes marked with a '3' and a fermata at the end.

Dördüncü Hane

Musical notation for the Dördüncü Hane section, featuring a treble clef, a key signature of one sharp (F#), and a 2/4 time signature. The notation consists of three staves. The first staff contains a sequence of eighth and sixteenth notes. The second staff continues the sequence. The third staff concludes the section with a triplet of eighth notes marked with a '3' and a fermata at the end.

Dr.Semra Özgün
Ocak-2013