

BAYATİARABAN PEŞREVİ

Usûl : Devrikebir

Cinuçen TANRIKORUR

Birinci Hane

Musical notation for the first hane of Bayatîaraban Peşrevî, consisting of four staves of music in 2/4 time, starting with a treble clef, a key signature of one sharp (F#), and a 28-measure structure. The notation includes various rhythmic values, accidentals, and phrasing slurs.

Teslim

Musical notation for the Teslim section of Bayatîaraban Peşrevî, consisting of two staves of music in 2/4 time, starting with a treble clef, a key signature of one sharp (F#), and a 28-measure structure. The notation includes various rhythmic values, accidentals, and phrasing slurs.

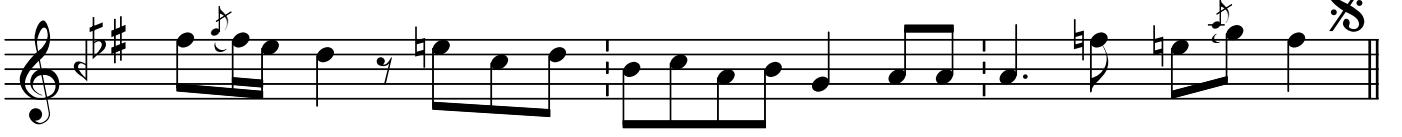
Musical notation for the second hane of Bayatîaraban Peşrevî, divided into four sections: 2. Hane'ye, 3. Hane'ye, 4. Hane'ye, and Karar. It consists of one staff of music in 2/4 time, starting with a treble clef, a key signature of one sharp (F#), and a 28-measure structure. The notation includes various rhythmic values, accidentals, and phrasing slurs.

İkinci Hane

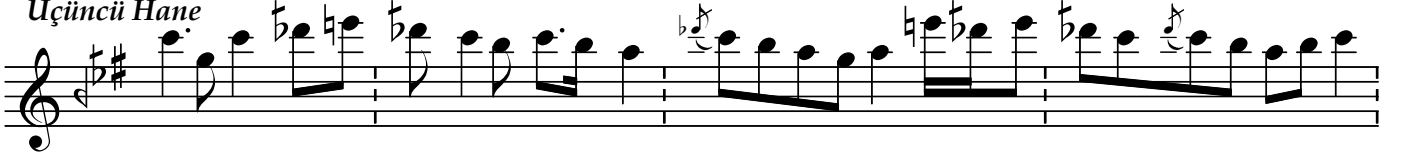
Musical notation for the second hane of Bayatîaraban Peşrevî, consisting of three staves of music in 2/4 time, starting with a treble clef, a key signature of one sharp (F#), and a 28-measure structure. The notation includes various rhythmic values, accidentals, and phrasing slurs.

BAYATİARABAN PEŞREVİ

Cinuçen TANRIKORUR



Üçüncü Hane



Dördüncü Hane



Dr.Semra Özgün
Ocak-2013