

ARAZBAR PEŞREV

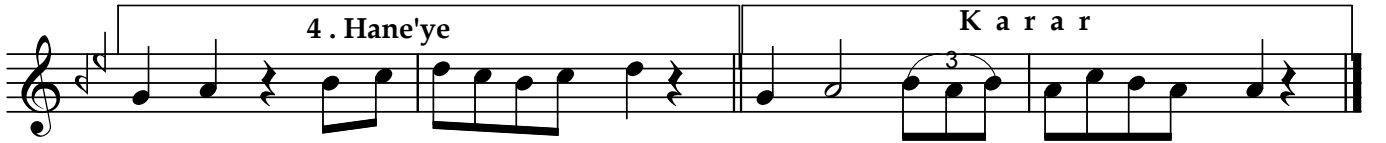
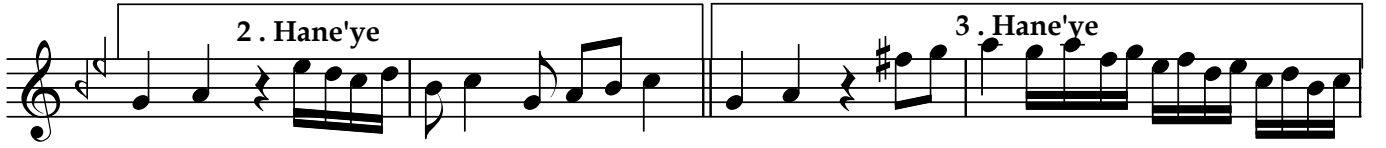
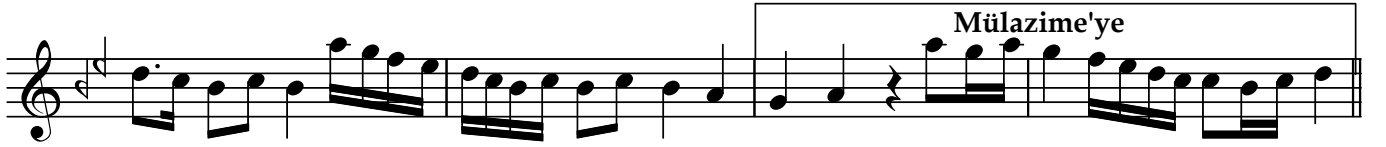
Usûl; Muhammes

Kemani Corci

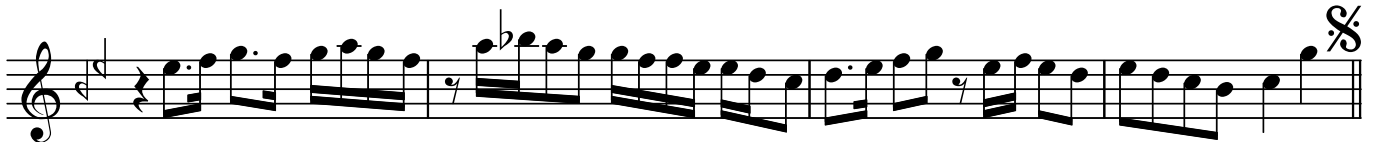
1 . Hane



Mülazime



2 . Hane



ARAZBAR PEŞREV

Kemani Corci

3. Hane

The 3rd Hane consists of four staves of music. The first staff begins with a treble clef, a 2/4 time signature, and a key signature of one flat (B-flat). The melody is composed of eighth and sixteenth notes, with some accidentals (sharps and flats). The second and third staves continue the melodic line with similar rhythmic patterns. The fourth staff concludes the hane with a double bar line and a fermata symbol.

4. Hane

The 4th Hane consists of six staves of music. The first staff begins with a treble clef, a 2/4 time signature, and a key signature of one flat. The melody is composed of eighth and sixteenth notes, with some accidentals. The second and third staves continue the melodic line. The fourth and fifth staves feature more complex rhythmic patterns, including triplets and sixteenth-note runs. The sixth staff concludes the hane with a double bar line and a fermata symbol.

Dr.Semra Özgün  
Kasım-2020