

## ACEMAŞIRAN SAZ SEMÂİSİ-1

Usûl; Aksak Semâi

Aydın ORAN

### 1 . Hane

Musical notation for the first hane, consisting of three staves of music. The first staff begins with a treble clef, a key signature of one flat (B-flat), and a 10/8 time signature. The music is written in a single melodic line with various rhythmic values and accidentals. The second staff continues the melody with similar rhythmic patterns. The third staff concludes the hane with a triplet of eighth notes and a final note.

### § Mülazime

Musical notation for the Mülazime section, consisting of two staves of music. The first staff begins with a treble clef, a key signature of one flat, and a 10/8 time signature. The music is written in a single melodic line with various rhythmic values and accidentals, including several triplet markings. The second staff continues the melody with similar rhythmic patterns and concludes with a final note.

### 2 . Hane

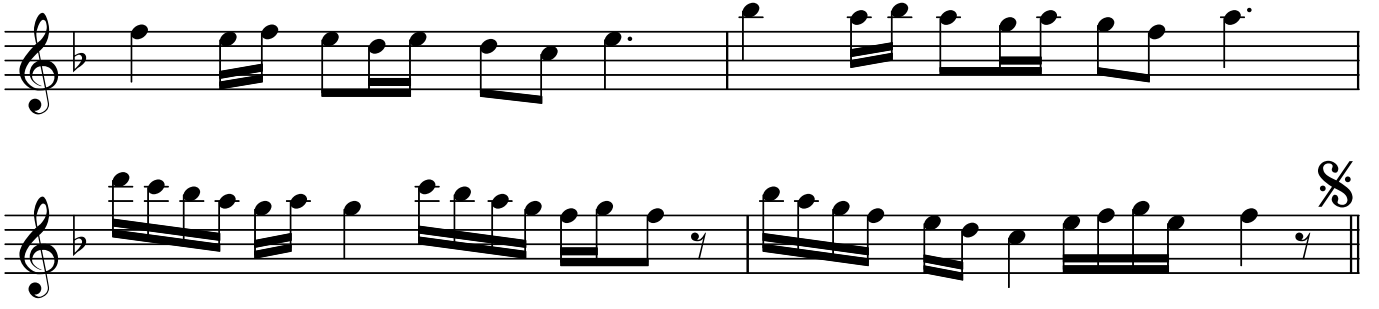
Musical notation for the second hane, consisting of three staves of music. The first staff begins with a treble clef, a key signature of one flat, and a 10/8 time signature. The music is written in a single melodic line with various rhythmic values and accidentals. The second staff continues the melody with similar rhythmic patterns. The third staff concludes the hane with a final section marked with a double bar line and a repeat sign.

### 3 . Hane

Musical notation for the third hane, consisting of two staves of music. The first staff begins with a treble clef, a key signature of one flat, and a 10/8 time signature. The music is written in a single melodic line with various rhythmic values and accidentals, including a triplet in the second staff. The second staff continues the melody with similar rhythmic patterns and concludes with a final note.

# ACEMAŞIRAN SAZ SEMÂİSİ-1

Aydın ORAN



## 4. Hane



Dr.Semra Özgün  
Ekim-2020