

EMİN ONGAN
ÜSKÜDAR MÜSİKİ
CEMİYETİ NEŞRİYATI

ACEMAŞİRAN PEŞREVİ

Usûlü ; Muhammes

Müzik ; Gazi Giray Han

1. Hâne

Musical notation for the first Hâne of the Acemaşiran Peşrevi. The notation is in 3/4 time and features a melodic line with various rhythmic patterns and ornaments. The notation includes eighth and sixteenth notes, rests, and dynamic markings like 'y' for breath or articulation. A first ending bracket labeled '1' spans the final two staves, and a second ending bracket labeled '2' spans the final two staves of the Hâne section.

Teslim

Musical notation for the Teslim section of the Acemaşiran Peşrevi. The notation is in 3/4 time and features a melodic line with various rhythmic patterns and ornaments. The notation includes eighth and sixteenth notes, rests, and dynamic markings like 'y' for breath or articulation. A first ending bracket labeled '1' spans the final two staves, and a second ending bracket labeled '2' spans the final two staves of the Teslim section.

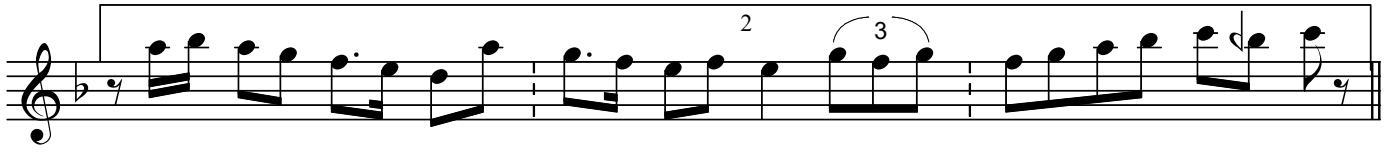
ACEMAŞİRAN PEŞREVİ

Müzik ;Gazi Giray Han



ACEMAŞÎRAN PEŞREVİ

Müzik ;Gazi Giray Han



4. Hâne



ACEMAŞİRAN PEŞREVİ

Müzik ;Gazi Giray Han

Dr.Semra
Özgün